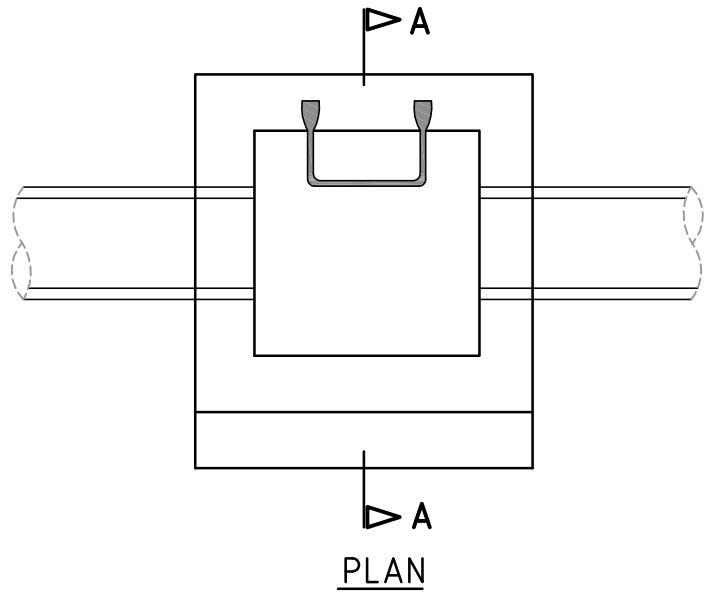
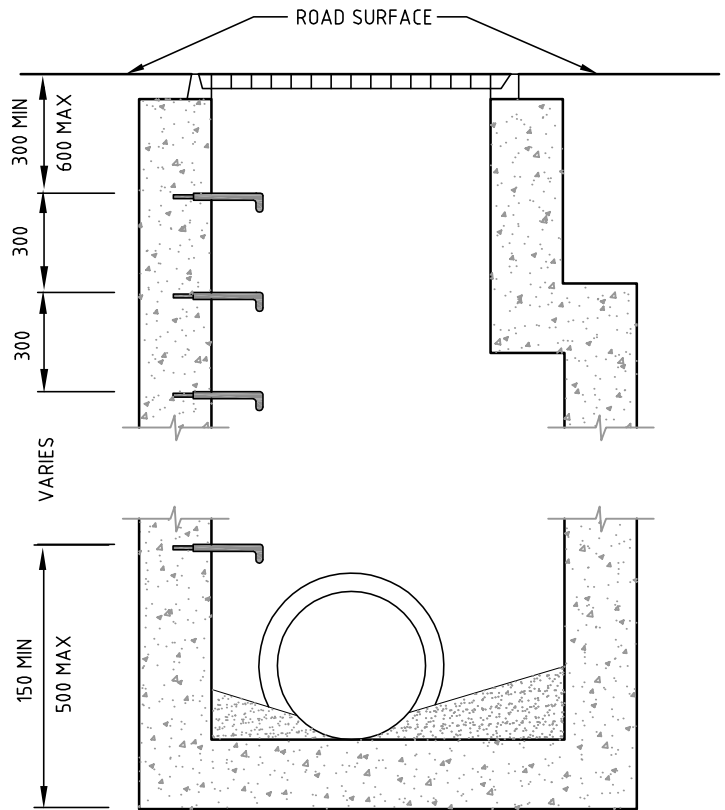


STEP IRON SPACING DETAIL



PLAN



SECTION A-A

NOTES:

1. PITS DEEPER THAN 1200mm BUT LESS THAN 2400mm SHALL BE FITTED WITH STEP IRONS.
2. PITS DEEPER THAN 2400mm SHALL BE FITTED WITH LADDERS. REFER TO STD DWG 1P 50322.
3. STEP IRONS SHALL BE STRUCTURAL GRADE 250 TO AS1204.
4. STEP IRONS SHALL BE HOT-DIP GALVANIZED AFTER FABRICATION.
5. STEP IRONS SHALL BE PLACED ON STRAIGHT WALL SECTION ON HAUNCHED PITS.

NOT TO SCALE

ENGINEERING SERVICES BRANCH



**STANDARD MCC
STEP IRON DETAILS**

<i>Approved By</i>		<i>Drawing Number</i>	1P 50321
<i>Principal Engineer Infrastructure</i>	<i>Manager Engineering Services</i>	<i>Revision</i>	E
<i>Date</i> Nov, 2010	<i>Date</i> Nov, 2010	<i>Docs Number</i>	