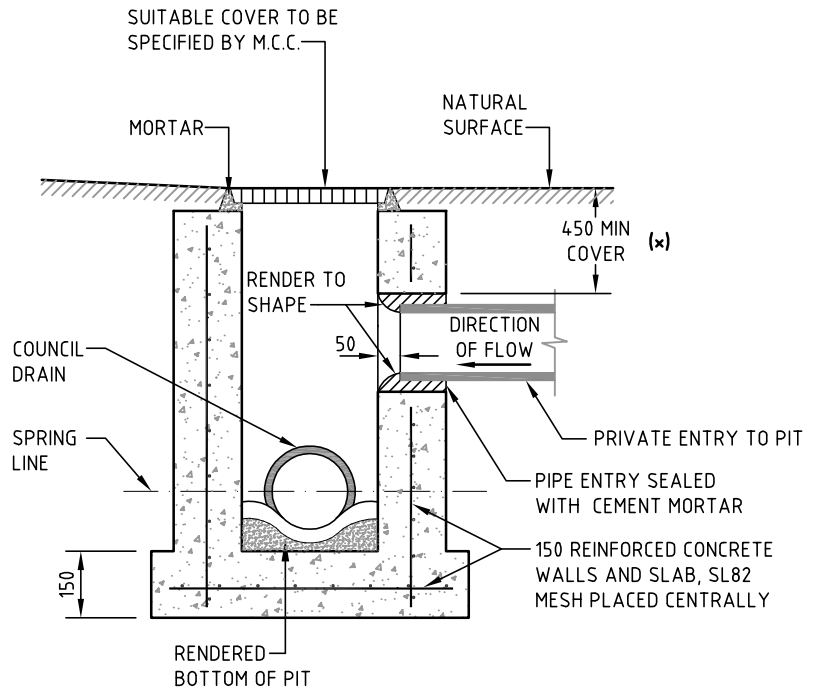


SECTIONAL PLAN VIEW



SECTION SHOWING METHOD OF ENTRY TO COUNCIL PIT

NOTES:

1. INVERT OF CONNECTION PIPE, WHERE PIT IS SHALLOW, SHALL NOT BE BELOW SPRING LINE OF COUNCIL DRAIN.
2. ENTRY OF MINIMUM SIZE TO SUIT PIPE DIAMETER IS TO BE CAREFULLY CUT IN WALL OF PIT
3. END OF ENTRY PIPE IS TO BE CUT OFF AND TRIMMED SO THAT IT IS AT LEAST 50mm FROM INSIDE WALL SURFACE OF PIT.
4. NO DEBRIS OF ANY KIND IS TO BE LEFT IN COUNCIL DRAIN.
5. MINIMUM COVER BELOW ROAD SURFACE IS TO BE 450mm (AS SHOWN IN DIAGRAM) UNLESS OTHERWISE PERMITTED BY THE COUNCIL.(x)

NOT TO SCALE

ENGINEERING SERVICES BRANCH



CITY OF MELBOURNE

STANDARD METHOD OF CONNECTING BRANCH TO COUNCIL STORMWATER PIT

Approved By

Principal Engineer
Infrastructure

Date Nov, 2010

Manager
Engineering Services

Date Nov, 2010

Drawing
Number

1P 50312

Revision

B

Docs
Number