

The brief called for a review of the heritage precinct boundaries within the CAD. This task was largely undertaken in concert with the survey of individual sites, although substantial attention was later paid to the extent to which various representative building types were protected either by precinct or individual controls. Consultation with MCC Strategic Planning and the Heritage Branch of the Department of Planning & Housing was also undertaken during the course of the study.

GENERAL OBSERVATIONS ABOUT THE EXISTING HERITAGE PRECINCTS

Several observations can be made about the nature and location of the heritage precincts at present:

- (i) It is initially surprising to see that the area encompassing the Houses of Parliament, the Old Treasury Building and the associated gardens is not a heritage precinct. The same might be said for the Eastern Hill area as a whole, the area about the Supreme and Federal courts, the large area comprising the State Library and National Museum, Russell Street Police Station, the former Melbourne (later Queen Victoria) Hospital and the Magistrates Court and Old Melbourne Gaol and, finally, the Queen Victoria Market and Flagstaff Hill area. The mere concentration of significant buildings in these areas suggests that they are prime candidates for designation as heritage precincts. On the other hand, the fact that the vast majority of contributory buildings in these areas are protected by individual buildings controls due to notable building or historic building status removes any urgency for an area control *per se*.
- (ii) The heritage precincts currently defined work well to protect significant streetscapes in which notable and lesser graded but contributory buildings are mixed. These streetscapes rely on precinct controls both to protect the lesser graded buildings which support the overall character and to protect amenity in terms of new development. Most of the precincts appear to have reasonable boundaries insofar as the areas immediately outside their boundaries which are not precincts are generally less densely populated with graded buildings. Some groups of notable or highly graded buildings also occur in streetscapes in which the majority of buildings are not graded, eg the west end of Collins Street. In these cases it is inappropriate to introduce a heritage precinct control, and protection of significant buildings must be based upon individual building controls.

Overall it can be said that the major streetscapes identified in the 1985 study are satisfactorily protected by the existing heritage precinct provisions and/or the notable building provisions.

- (iii) On the other hand some small sections of streets, such as the east end of Flinders Lane and Flinders Street, seem to have missed out on heritage precinct controls for no very clear reason, given that large sections of these streets with similar character are given this protection. This may relate to the fact that sections of Flinders Lane have been marred on their north side by recent building developments. Nonetheless, these sections of the streets generally

have some streetscape grading and they contribute to the character of both streets overall.

- (iv) There has been a considerable loss of warehouse and factory building stock within the CAD, building types which once contributed to the character of large sections of the CAD. As noted in the previous chapter, areas which have been particularly hard hit in this context include the site of the Melbourne Central complex, the lesser streets about other towers such as 101 Collins Street, 333 Collins Street, the ANZ Tower and Bourke Place. An attempt has been made to retain some of the industrial and slum character of the east of Little Lonsdale Street in the recently completed Commonwealth Centre site redevelopment (which includes both the Commonwealth Centre and the Telecom tower), but the remains are fragmentary, generally sanitised, often unoccupied and placed around the perimeter of the site almost exclusively, with no sense of the original laneway network.

Although Flinders Lane, Little Bourke Street and their subsidiary streets and lanes retain some of this industrial warehouse character, and are largely protected by heritage precinct controls at present, it would seem appropriate to extend some degree of planning control to the significant laneway precinct bounded by Elizabeth, Bourke, Queen and La Trobe streets and including Hardware Street, Niagara Lane, Guildford Lane and Heape Court.

- (v) The current planning climate is not such as to encourage the suggestion that there be a wholesale extension of heritage precinct controls within the CAD. While no such suggestion has been put to the test in the CAD itself, the recent rejection and abandonment of planning scheme amendments in neighbouring municipalities such as Essendon and Prahran provides a strong argument for seeking alternatives which do not cause dramatic reworking of the planning scheme and do not involve the extension of what are essentially Urban Conservation Area controls to new areas.

On this basis it is suggested that there be no radical reworking of the heritage precinct boundaries. Indeed, it is hoped that alternatives can be found to the introduction of any new heritage precincts or parts thereof *per se*.

SUGGESTED ADDITIONAL PRECINCT CONTROLS

The two areas which most clearly call for some sort of area and streetscape control, as mentioned above, are:

- (i) the east ends of Flinders Lane and Flinders Street;
- (ii) the precinct bounded by Elizabeth, Bourke, Queen and La Trobe streets and including Hardware Street, Niagara Lane, Guildford Lane and Heape Court (see attached maps).

Each of these have a character which is based upon low to medium rise, medium density development around small streets and laneways. Most buildings are of low individual significance but the streets have an overall cohesion based upon the dominance of warehouse and factory buildings. Most of these buildings are graded lowly because they are of no known individual historical significance, and because the emphasis in previous conservation studies upon architectural style has adversely affected appreciation of their simple utilitarian forms and details. This should not be allowed to undermine our appreciation of their collective historical importance as a reminder of the important role manufacture has played in the development of the CAD throughout much of its history. The post-war emphasis placed upon the role of the city

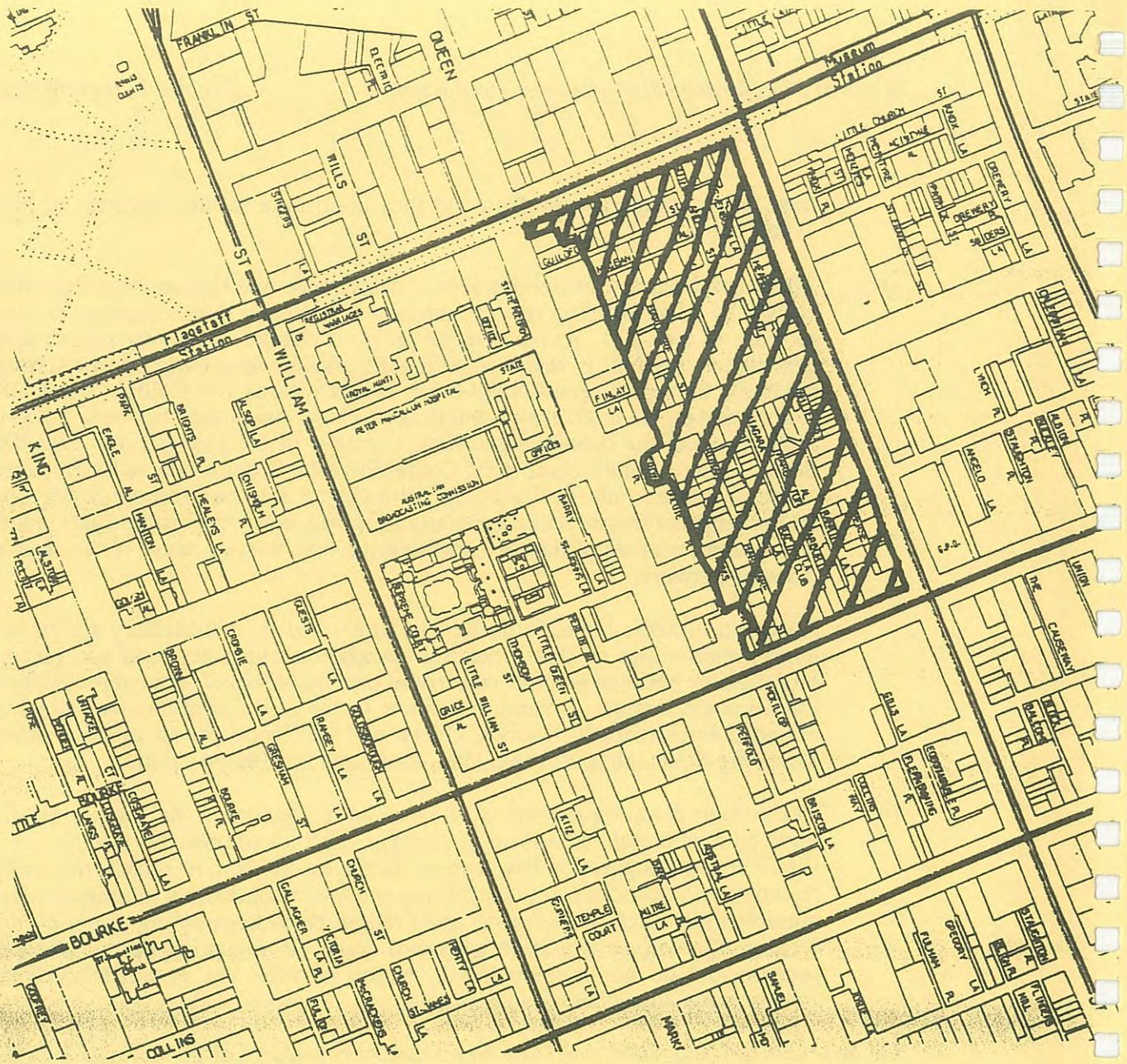


ILLUSTRATION 2
AREA BOUNDED BY ELIZABETH, BOURKE, QUEEN AND LA TROBE STREETS
SUGGESTED FOR ADDITIONAL PRECINCT CONTROLS

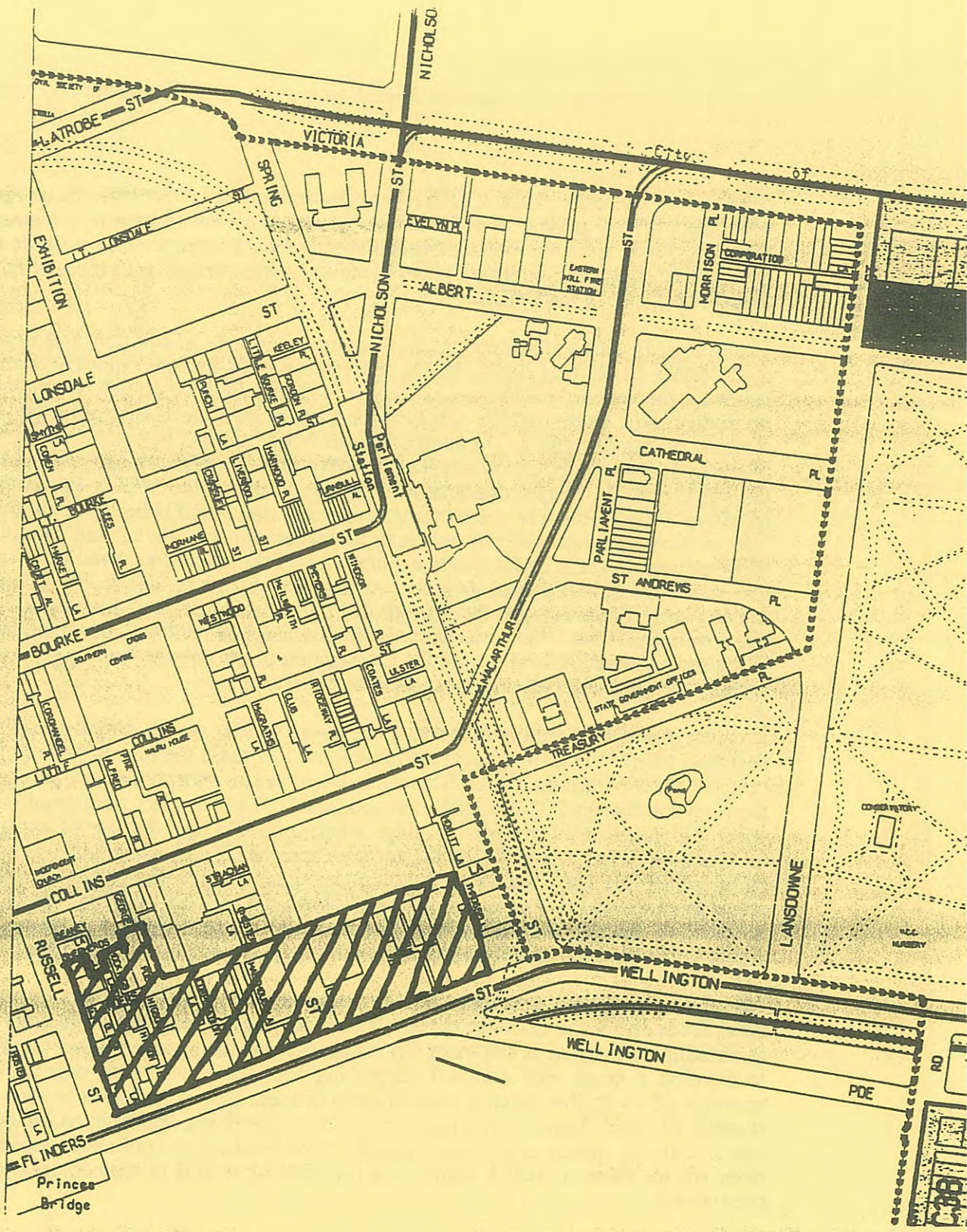


ILLUSTRATION 3
AREA TO EAST OF FLINDERS LAND AND FLINDERS STREET SUGGESTED FOR
ADDITIONAL PRECINCT CONTROLS

centre as a 'business district' (CBD) where the captains of law, commerce and politics were the primary players is reflected in the stress the conservation movement has tended to place upon the major thoroughfares of the city centre. This attitude is now giving way to a more complex understanding of the various activities which have shaped the fabric of the CAD.

The two areas above are important on a number of levels. In addition to containing a high density of heritage items, they have also been identified as containing significant laneway systems in the MCC's *CAD Laneway Study: Policies and Recommendations for Individual Lanes*,¹ and the precincts themselves are well described in the relevant sections of this document. Furthermore, their building stock is well suited to the sort of medium density, inner city residential redevelopment presently encouraged by both the MCC and the State Government, most obviously by the MCC's *Postcode 3000* initiative. Finally, the low rise buildings and small streets and lanes serve an important role in terms of their overall character as pedestrian precincts, and many of the buildings are versatile and suited to a multitude of uses, as offices, small scale factories and warehouses, residences, galleries, studios, restaurants or cafes. The diversity of use and activity encouraged by this type of building stock has become rare in the city, but is essential if the CAD is to regain its vitality. Replacement with new building stock will almost inevitably tend toward the introduction of use specific buildings, eventually curbing the diversity presently possible within these areas.

It is suggested that an amendment of the local section of the planning scheme be designed to provide an integrated response to each of these matters of concern in these specific areas within the CAD. This amendment might incorporate new paragraphs in the relevant clauses 202-2.6, 202-2.20 and 202-2.24 which place additional emphasis upon the retention of graded buildings where possible and the use of sympathetic architectural forms and materials in new developments. Emphasis might also be placed upon compatible uses such as residential redevelopment and small scale industrial and arts complexes where the original design and character of these buildings can be seen as an asset to be capitalised upon rather than something requiring change. Other compatible uses such as restaurants and small offices are already in evidence.

The objective of such an amendment is to augment the existing planning objectives for these areas and make extra provision for current planning concerns. The latter include facilitating an increase in the inner city residential population and helping the inner city to develop a more vital and self supporting mixture of uses and occupants. The retention of a valuable heritage asset in terms of these areas should thus be seen as a by-product of other planning interests, rather than something which must be generated specifically by means of heritage controls. The resulting amendment should seek to cater for all these mutually supporting interests by means of one integrated set of provisions.

STATEMENTS OF SIGNIFICANCE FOR HERITAGE PRECINCTS AND THE PLANNING SCHEME

It has been noted by the consultant team that the existing heritage precincts have had citations prepared and published in 'Melbourne Planning Scheme: Central City

1 Strategic Planning Branch, City of Melbourne, *City of Melbourne CAD Laneway Study: Policies and Recommendations for Individual Lanes*, July 1991 (see also CAD Laneway Study Information Sheets).

Planning & Design Guidelines'² and these have been reproduced at the end of this chapter, along with the list of 'contributory buildings' within heritage precincts contained within the same document.

Note that this list of contributory buildings has been prepared on the basis of different criteria than those employed by the consultants of the present review in grading graded buildings A, B and C grades. It thus excludes many graded buildings within heritage precincts. It is suggested by the present authors that all graded buildings within heritage precincts should be recognised as contributory and/or individually significant buildings, and their contributory and individual significance should be given clear protection under the Planning Scheme.

The precinct citations have a status as adjuncts to design guidelines, but are not formally recognised within the Planning Scheme at present. While the Planning Scheme recognises certain aspects of the heritage precincts as special and deserving of retention, it is appropriate that the *Burra Charter* principle of defining the significance by means of a citation be followed. This citation, or statement of significance, should form the basis of planning policy for the respective precinct. It would therefore seem appropriate to establish clearer links between these existing citations and the objectives for the areas described within the Planning Scheme, and any future amendment to the Planning Scheme should endeavour to establish a link in this way.

HERITAGE PRECINCT STATEMENTS OF SIGNIFICANCE³

Bourke Hill

This precinct derives much importance from its association with Parliament House which was built progressively from 1856. This nineteenth century complex dominates the Bourke St vista from as far away as William St, and is emphasized by the sympathetic scale of the buildings on either side of the Bourke St hill. The precinct also includes such stylish and prominent buildings facing Spring St as the Princess Theatre (1886) and the Hotel Windsor (1883). These contribute to the good amenity of Spring St and its gardens. The buildings on either side of Bourke St reflect the variety of social activities that have taken place in this area since the mid nineteenth century. The scale of the city's buildings prior to the boom era of the 1880's is seen in the simple design and low scale of the two-storey Crossley's Building (1884-1885).

The area also comprises part of the entertainment precinct of the central city, and a building such as the Salvation Army Temple (1890) reflects the interest of social reformers in the nearby 'back slums' epitomised by the nearby Gordon House (1883-4). A philanthropic venture built by a syndicate headed by the actor-manager and politician George Coppin, it was named after the martyr of Khartoum and was an ambitious venture intended to provide family accommodation for the respectable poor. The venture was not successful in achieving its purpose, however, and Gordon House later became a shelter for homeless men. It survives as a unique social document in the narrow confines of Little Bourke St, and is complemented by the low scale of surrounding red brick buildings.

The juxtaposition of the Parliament, the former deprived areas of Little Bourke St and the style of Bourke St gives the precinct an unrivalled historic texture and overall the theatres, hotels, cafes and quality bookshops contribute to the relaxed and elegant character of the eastern end of the city.

2 'Melbourne Planning Scheme: Central City Planning & Design Guidelines', publication prepared by the City of Melbourne and the Department of Planning & Housing, State Government of Victoria, July 1991, pp A1-A3.

3 Ibid, pp A1-A5.

Bourke West

Architecturally diverse but coherent in scale and picturesque setting, this precinct contains highly expressive elements of the late 19th and early 20th century city. Apart from containing a rare and interesting mix of diverse functions and building types this precinct includes a range of government services located in the western quarter of the city. Some buildings such as Unity Hall (1916), Hudson's Stores (1876-7) and the Old Tramways Building (1891) have important historical associations with transport and the Spencer Street railway yards. The comparatively low levels of even the tallest buildings contrast well with the single storey structures on the southern side of Bourke St, enabling the taller structures to be seen from their original perspective.

Collins East

Collins St has often been identified as Melbourne's leading street. This has been due, in part, to the pleasant amenity and distinctive character of its eastern end. Its relative elevation, and proximity to the Government Reserve and points of access to the city provided for its development as an elite locale. Initially a prestige residential area, the Melbourne Club re-established itself here in 1857, and by the 1860's the medical profession had begun to congregate. By the turn of the century it was firmly established as a professional and artistic centre of Melbourne, with part of its fame due to its tree plantations in the French boulevard manner (hence the 'Paris end') which dates from 1875.

At all times until the post 1939-45 war period, redevelopment took place in a quiet and restrained manner, with an emphasis on dignity, harmony and compatibility with the intimate scale and pedestrian qualities of the street. These qualities are still embodied in significant remnant buildings and other artifacts, despite the intrusion of large developments. The qualities of the street are also embodied in the social functions of the buildings, which include elite smaller scale residential, religious, social, quality retailing and professional activities.

Flinders Gate

This precinct comprises the city's southern face, a major access point at Princes Bridge, and the specialised commercial district of Flinders St. The area has been a gateway to the city from the south ever since the first Prince's Bridge (1841) and Melbourne's first railway were constructed, and Flinders and Spencer St stations were linked by a viaduct in 1879. A grand new Princes Bridge (1886) confirmed the trend to redevelopment in the latter decades of the 19th century. The present Flinders St Station (1906-10) also dates from this period. Proximity to the centre of Victoria's railway system explains the location and the size of the Commercial Traveller's Club (1899) in Flinders St.

It was here, at Melbourne's southern gate, that the Anglican community chose to build their grand new St Paul's Cathedral (1880-91), replacing an earlier church on the same site. The choice was a logical one, as many of them lived in the southern and eastern suburbs. More commercial motives saw the construction in Flinders St of large retail emporia such as the former Mutual Store (1891) and Ball and Welch (1899).

This precinct offers evidence of all these changes, and also includes two of Melbourne's earliest and best-known hotels, the Duke of Wellington (1850) and Young and Jackson's Princes Bridge Hotel (1854). An important feature of Flinders St's southern face of buildings is their uniform height facing the river.

Flinders Lane

Proximity to the river Yarra, Queens Wharf and the Customs House marked Flinders Lane as an appropriate location for the establishment of wholesaling businesses in the 19th century. Up until the 1870's and 80's Melbourne was the centre of the colonial re-export trade. Overseas cargoes were

received, re-packed and distributed to the southern colonies and New Zealand. This trade created a demand for functional warehouses offering large areas of space close to the ground without any need for external display. This generation of buildings were plain brick or stone, up to three storeys in height, and limited to one commercial occupant.

The international exhibition of 1880-81 helped change this. International agents were introduced into the commercial economy, together with a system of indented goods sent direct from manufacturer to retailer. As this system took hold, and the southern face of the city became more accessible to rail and road (with the development of Flinders and Spencer St stations, and the construction of the new Princes Bridge) it became uneconomic to maintain large areas of warehouse space in Flinders Lane. The new wholesaler was able to store his goods elsewhere, requiring only a rented office and sample room in the city proper. The new buildings of the 70's and 80's were therefore taller, more architecturally pretentious, and they presented a display to the street.

This transition was completed with an intense period of building between 1900 and 1930. These new, and taller, buildings incorporated large showcase windows to both ground and basement floors, characteristically separated by a floor line approximately one metre from the ground. Flinders Lane retains buildings from all three eras, and presents a striking physical display of the changing pattern of trading activity in Melbourne.

Little Bourke

Chinese immigrants settled in Little Bourke St as early as the mid 1850's. Chinese occupation in the city centre then extended north and west, creating a distinct enclave. The buildings that they occupied were not distinctively 'chinese' in their appearance but were rather the typical small brick shops, dwellings, warehouses and factories of the less affluent areas of Victorian Melbourne (indeed the area was not known as 'Chinatown' until the 1970's).

A number of architecturally distinctive, community-oriented buildings were constructed in the heart of the precinct on Little Bourke St. These included the Num Pon Soon Chinese Club House (1861) and the premises of leading Chinese merchant Sum Kum Lee (1888). However, the most obvious features of Chinatown were the Chinese themselves, their characteristic trades, and the often run-down general character of their quarter of the city. In the late nineteenth century the overwhelmingly Anglo-Celtic community stigmatized both the Chinese and their portion of the city for an association with vice but, for many Chinese, Little Bourke St was a centre of trade and community life. Today, Chinatown's shops, restaurants and distinctive character are popular with many Melburnians and tourists as well as the Chinese community.

The precinct is bordered on its northern boundary by taller strip development fronting Lonsdale St. Many Victorian and Edwardian buildings survive in this location and they provide an important contextual link between the 'back streets and lanes' of the heart of the precinct and the more public areas of the city. Since the Second World War Lonsdale St has become a centre for Melbourne's Greek community, further enhancing the cultural diversity of this cosmopolitan precinct.

Post Office

For the immigrant community of Victorian Melbourne, dependant on the mail for news of all kinds, the GPO was an important social institution. The present building reflects this social standing in its imposing architecture and occupation of a prominent corner site. The present building replaced an earlier structure of 1841 and was constructed in three stages between 1859 and 1907. The importance of the post office ensured a variety of other commercial attractions in the vicinity, many of them of retail character. The confluence of omnibus and tramway facilities assisted this.

Overall, this precinct has maintained its place as a major retail centre for the metropolis, surviving the challenges of such suburban centres as Smith and Chapel Streets and Chadstone. In the inter-war period such establishments as Buckley and Nunn redeveloped their properties, the Myer Emporium put on its

present face, and London Stores, the Leviathan Public Benefit Bootery, G J Coles and Dunklings all developed as substantial variety and specialist stores.

Important 19th century buildings such as the Royal Arcade and the GPO are now intermingled with the commercial gothic and art-deco characteristics of 20th century shops and emporia to create a precinct characterised by glamour and variety. The precinct also contains sub-areas of great cultural value, such as the post office steps and arcades and Myer's windows (especially when decorated at Christmas time). The precinct's status as a meeting place has been recognised and enhanced by the establishment of the Bourke St Mall.

The Block

Within this precinct may be found not only the heart of Victorian Melbourne's most fashionable retail area but also the beginnings of its 'Chicago end' along Swanston St. 'Doing the Block' a term coined to describe the popular pastime amongst Melbourne's middle classes of promenading outside the plush retail and accessory stores, reached its height in the boom years of the 1880's. The tradition of arcaded shopping was borrowed from nearby Royal Arcade and became a marked feature of this precinct. Block Arcade (1891-93), Centerway Arcade (1913), Block Court (1930), Manchester Unity Arcade (1932), and the Century Arcade (1938-40) testify to the continued popularity of this form.

The precinct contains a great number of significant and architecturally impressive buildings dating from the boom years of the 19th century through to the period immediately prior to the 1939-45 war. The Elizabeth St end is dominated by the smaller buildings of the earlier period whereas along Swanston St may be found the Manchester Unity Building, the Capitol Theatre and the Century Arcade, all based on precedents found in Chicago at the time, and pushed to the maximum height limit of 132 feet that existed in Melbourne until the building of the ICI building in 1958.

The Market Precinct

The market precinct derives its importance and significance from its association with the Queen Victoria Market, providing an exemplar of produce trading methods from the City's early days to contemporary times.

Queen Victoria Market, on the corner of Elizabeth and Victoria Streets, is the last of the four markets which originally existed in central Melbourne. It commenced with the construction of the Wholesale Meat Market in 1868, and in 1877 the City Council acquired part of the old Melbourne General Cemetery and built the first fruit and vegetable sheds. In March 1878 the name "Queen Victoria Market" was officially conferred on the site and, in 1884, a new front for the Meat Market and the Elizabeth Street shops, designed by William Salway, was added. Between 1867 and 1936 the market was extended.

The market precinct continues today to derive its identification from the Queen Victoria Market, which has expanded its operations beyond that of a produce market. It remains, also, one of the City's most popular and valuable tourist attractions.

CONTRIBUTORY BUILDINGS IN HERITAGE PRECINCTS⁴

Bourke Hill Precinct

20-30 Bourke Street	Metro Nightclub
79-85 Bourke Street	Shop and Dance Studio
27-35 Lit. Bourke Street	Offices
37-41 Lit. Bourke Street	Harwood House
43 Lit. Bourke Street	Liverpool Chambers
27 Windsor Place	Offices

Little Bourke Precinct

118-122 Bourke Street	Shops/cafe
22-26 Celestial Avenue	MCC substation
16-20 Corrs Lane	Showroom
24-30 Heffernan Lane and 17-21 Waratah Place	MCC substation
172-176 Lit. Bourke Street	Restaurant
229 Exhibition Street	Office
231-233 Exhibition Street	Restaurant
235 Exhibition Street	Cafe
237-239 Exhibition Street	Bank/office
113 Lonsdale Street	Shop/office
115 Lonsdale Street	Offices
117-121 Lonsdale Street	Offices
177-183 Lonsdale Street	Shops/offices
185-191 Lonsdale Street	Shops/offices
239 Lonsdale Street	Shops
241-245 Lonsdale Street	Fanny's
14-16 Market Lane	Restaurant
189 Russell Street	Amusement Parlour
191-193 Russell Street	Shops
205-207 Russell Street	Shops
209-211 Russell Street	Restaurant
213-217 Russell Street	Tetis building
208-214 Swanston Street	Shops
240-246 Swanston Street	Shops
248-256 Swanston Street	Curtin House
4-12 Tattersalls Lane	Shop/office

Bourke West Precinct

636-638 Bourke Street	Unity Hall
655-659 Bourke Street	Hudson Stores

Post Office Precinct

309-311 Bourke Street	Shops
319-321 Bourke Street	Shops
327-329 Bourke Street	Deva House
345-347 Bourke Street	Shops
136-140 Elizabeth Street	Shop
292 Lit. Collins Street	Shop/offices
294 Lit. Collins Street	Shop/offices

4 Ibid, p A5.

306 Lit. Collins Street	Bank/offices
271-273 Lonsdale Street	Myer retail
275-321 Lonsdale Street	Lonsdale House
Collins East Precinct	
7 Alfred Place	Mietta's
82 Collins Street	Shop
109-113 Collins Street	Offices
Flinders Gate Precinct	
164-170 Flinders Street	Masonic Club
224-226 Flinders Street	Shop
250-254 Flinders Street	Australia Post
286-290 Flinders Street	Hosies building
334-340 Flinders Street	Reid House
Flinders Lane Precinct	
28-32 Elizabeth Street	ANA building
34-36 Elizabeth Street and 289-291 Flinders Lane	Carlow House
153-159 Flinders Lane	Cavendish House
161-163 Flinders Lane	Offices
164-170 Flinders Lane	Richard Allen & Sons Pty. Ltd. bldg
165 Flinders Lane	Offices
179-181 Flinders Lane	Office/showroom
183-185 Flinders Lane	Toronto House
226-232 Flinders Lane	Invicta House
237-239 Flinders Lane	Shops/offices
238-244 Flinders Lane	Flinders House
241-243 Flinders Lane	R.E. Ross House
252-254 Flinders Lane	Centre House
301-311 Flinders lane	Reliance House
310 Flinders Lane	Offices
313-315 Flinders Lane	Offices
349-351 Flinders Lane	Restaurant/gym
353-355 Flinders Lane	Labassa House
The Block Precinct	
84-86 Elizabeth Street	Shops
88 Elizabeth Street	Shop
90 Elizabeth Street	Shop
92-94 Elizabeth Street	Beehive building
104-110 Elizabeth Street	Brash's
228-232 Collins Street	Office
276-278 Collins Street	Allans building
273-279 Lit. Collins Street	Presgrave building
285 Lit. Collins Street	Shop
287-289 Lit. Collins Street	Bank
317-321 Lit. Collins Street	Shops/warehouse
119-121 Swanston Street	Talma building
123 Swanston Street	Office building

EXISTING DATA RESOURCES

The consultant team experienced initial delays in its review process because of the inaccessibility of much of the MCC's data on heritage sites. Several points should be noted:

- (i) The MCC retains no list of reports regarding heritage undertaken either in house or by consultants.
- (ii) The MCC has at present no central repository of heritage data. While some data is readily accessible, such as the twenty volumes of Building Identification Forms relating to the CAD held by the Statutory Planning division, almost all other data is dispersed and was either located only after extensive searching or was not located.
- (iii) Although much of the work undertaken by consultants on behalf of the MCC in the past has been completed on computers, the MCC has not retained original discs containing that information and thus has lost considerable freedom to manipulate or utilise the data for which it has paid in the past.
- (iv) No supporting documentation for the 1985 heritage study (such as a brief, a final report or a bibliography) was located and forwarded to the consultants. A summary of the abbreviations and sources referred to on the Building Identification Forms was eventually provided courtesy of the consultant for the 1985 review.¹
- (v) Much of the data provided on the Building Identification Forms and associated citations was inadequately referenced and annotated, greatly reducing its utility. The MCC does not appear to have established basic criteria for the substance of reports prepared by consultants.
- (vi) The data held by the MCC appears to have been added to on an ad hoc basis. Building Identification Forms have been prepared for a number of buildings which are not listed in the 1985 schedule of graded buildings. New sheets, often with different gradings to those found on the original sheets, have also been added as the result of later studies (for example, Graeme Butler's 1989 Little Bourke Historic Precinct Study). Nonetheless, there has been no systematic attempt to upgrade other information in a meaningful way. In

1 Typical acronyms used on the 1985 Building Identification Forms are:

RB	Rate Book
BW	MMBW Property Service Cover
VI	<i>Victoria Illustrated</i>
D	Sands & McDougall Directory
F.ST	Foundation Stone
BI	'Building Ideas', guide to Melbourne by Neville Quarry
TD	Telephone Directories
76	Lewis Vines CAD study (65)
77	Walker CAD study
78	Murphy CAD study (42)
79	Perrott CAD study (23)
80	Reid CAD study (66)
81&82	Yuncken Freeman CAD study
83	Willingham CAD study
84 & 85	Wilson CAD studies, 2 volumes (47)

[NB. The reference numbers used for these sources on the RAIA 20th Century Buildings Study sheets included in the Building Identification Form folders are noted in brackets]

particular, there has been no methodical recording of the demolition of, or major changes to, graded buildings.

It is important that the MCC now seeks to correct some of these problems. Much of the consultants' time in this review was taken up with a detailed survey of the CAD to correct factual information about sites which have been altered or demolished. It is intended that at the end of this review the MCC will have a complete and correct description of each graded site and a corrected grading (if necessary). The MCC must now establish practices which will maintain and update this resource.

MAINTENANCE OF HERITAGE DATA INTO THE FUTURE

When first this review was commissioned the consultants were informed that a data base was soon to be established and that MCC heritage information would be entered into this data base. Considerable time was spent by the consultants and the MCC in discussing the appropriate design of new Building Identification Forms and citations for significant buildings. It is essential that the creation of such a data base be realised in the near future, before the information prepared by this review becomes out of date. It is also essential that the MCC instigate interim and ultimate processes for recording changes to sites on their data resource, whether it be the forms themselves or the future data base. For example:

- (i) any permit for demolition should be systematically recorded, and notice made of the demolition if it occurs on the appropriate sheet or file within the data base. A similar procedure should be introduced for external alterations.
- (ii) an attempt should be made to locate and make good copies of all heritage reports commissioned by the MCC over the past ten years.
- (iii) at least one copy of all substantial past and future items of heritage information should be lodged with the Archives division of the MCC. Archives should create a catalogue of these items and ensure that they are well maintained, complete and accessible.
- (iv) a review of CAD heritage should be undertaken every five years, and procedures within the MCC for maintaining the data base should be designed so as to reduce the time (and cost) associated with the review process.

The MCC should also establish basic criteria for the preparation of major reports on heritage by consultants. These criteria should:

- (i) outline acceptable levels of documentation and appropriate use and recognition of references by consultant authors;
- (ii) define a standard format;
- (iii) require submission of original artwork and a copy of the report on a disc compatible with an agreed MCC-owned computer system;
- (iv) require arrangement of an ISBN number for each report prior to submission, and identification of the number on the final report. This last task could be undertaken by MCC staff on behalf of the consultant.

An educational kit for students would be an appropriate spin-off from the work undertaken in this review and, indeed, the various reports which have preceded it. It is suggested that any such kit should be aimed at VCE students rather than tertiary students, as tertiary students should most likely be looking at the primary material itself rather than being spoon-fed processed information. On the other hand, there is no reason why a certain amount of the material produced in a kit aimed at a VCE audience should not be a source of stimulus and interest to younger students and the general public at large.

The sort of material which could be generated would be:

- i a simplified bibliography;
- ii a series of small history texts relating to specific aspects of Melbourne's development (perhaps based around the themes identified within the various sections of the Environmental History);
- iii a video with voiced-over text and fixed illustrations (selected from the illustrations ultimately associated with the final history publication) combined with moving shots identifying aspects of Melbourne's heritage within their modern context;
- iv a slide collection of selected maps along with illustrations of streets, buildings and people, accompanied by a basic text;
- v a taped commentary to accompany walking tours, although this would require more preparation and expense than the previous options. An alternative to this might be a written text.

These suggestions, outlined in a little more detail below, are preliminary only. Without costing the various items, establishing a budget and setting out to design the material in more detail it is impossible to say whether such a kit would comprise only one of the above, several of the above, or all of the above. Indeed, it might be possible to look at producing several kits aimed at different audiences (history students as opposed to art students, for example, or even tourists) or different themes.

Most importantly, extensive discussion with the public servants involved in designing the various components of the VCE would be essential to ensure that the final product was going to be accepted, circulated, promoted and, if necessary, marketed. It would therefore seem advisable to embark upon negotiation with State Government before proceeding with the development of a brief or calling for submissions of interest. If the market for a school orientated educational tool cannot be firmly established then it is quite possible that the money might be spent more judiciously on other forms of public education.

BIBLIOGRAPHY

A simplified bibliography could be used as the basis of real research exercises for VCE students. It could be accompanied by a teacher's kit which suggests topics for research essays in areas well covered by the bibliography. Students would be required to investigate select primary and secondary sources on these topics, prepare a somewhat extended bibliography (ie. including material they have discovered themselves from

other bibliographies and from library catalogues) with a brief summary of the value of each text, and prepare a 1-2 000 word essay on the topic. This is just one suggestion for the use of such a bibliography, and no doubt other exercises could be easily generated by the same material.

A SERIES OF HISTORY TEXTS

A series of small texts on chosen topics taken from the Environmental History could be used as the basis of a similar exercise or in conjunction with the bibliography. As suggested above, these might draw upon the themes outlined within the Environmental History, which with editing for a younger audience could easily be worked into an appropriate format. The Environmental History itself might even be considered an suitable resource for history students at this level, with little or no editing. Other exercises based around these texts could be creative rather than strictly academic, with students drawing upon the associations of the text to generate stories about people and environments within the past, or else selecting an element of the text as the basis for a drawing, photograph, sculpture or other figurative or abstract expression. Some themes might form the basis for class discussion relating to changing ideas on the nature of a city, or to urban and suburban lifestyles, or to basic urban design concepts.

VIDEO

A video would have the most immediate impact as a tool designed to involve VCE or younger students in the story of the evolution of the city. It could form the basis of class discussion, could be an introduction and point of departure for any of the exercised discussed above, and could also stand alone as an item of interest to tourists and the general public. It is extraordinary how ignorant most Melburnians (and Victorians) remain about the basic story of the settlement of Melbourne, the reasons for choosing this site, the rationale for laying it out on this grid and alignment, and the evidence that remains today of the topography that greeted the first settlers. The story of the settlement of Melbourne is in itself of great general interest, but as a source of fascinating fact and potential myth-making for its inhabitants it has to date remained largely unplumbed. A well made video could help amend this situation. Moreover, the creation of such a video could be an exercise in itself, thrown open to either one of the architecture and planning schools within our universities or to a school of film. Finally, given that many VCE students are now given the task of making home videos on certain themes as homework assignments, superseding the traditional essay, a general video could be used as the basis upon which small groups of VCE students made their own videos on particular themes relating to the city.

SLIDE COLLECTION

A collection of slides accompanied by a written text might be seen as a cheaper and more easily generated version of the video described above, and might be used in the same way, as a simple educative tool in itself or as the information basis from which to generate further work. This would certainly be an appropriate format for the illustration of maps, drawings and historical photographs, which might need to be analysed in detail during class discussion.

TAPED COMMENTARY

A taped commentary for walking tours would be directed more at a tourist market than at students, because of the expense and fragility of the equipment required by each individual. A cheaper alternative would be to provide a walking tour text, with keyed maps and chosen illustrations. This need not duplicate the small number of walking tour guides already available, although these could be improved upon. Tours could be

based on historical or architectural themes rather than the precinct approach so common to date. This would allow the text to be more academic and educative in approach, developing certain themes in some detail through the discussion of a number of carefully selected exemplary sites.

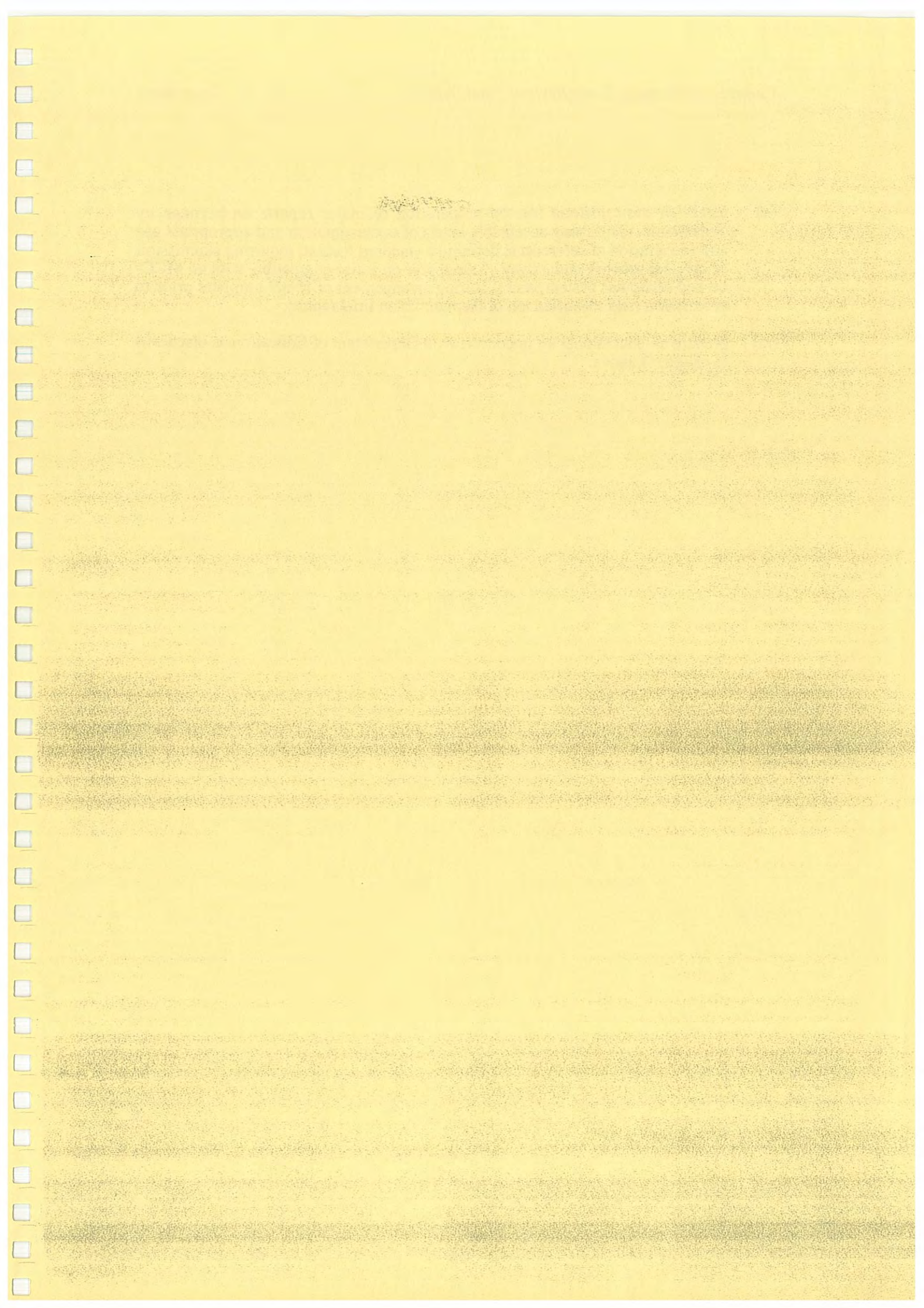
COMPOSITION OF THE TEAM TO PREPARE EDUCATIONAL KIT

It is important that the team of consultants chosen for the preparation of such a kit be drawn from a variety of disciplines. An appropriate team would comprise an historian, an architectural historian and an experienced secondary school educator, preferably with a thorough working knowledge of the VCE program.

9 SUMMARY OF RECOMMENDATIONS

The consultant team recommend that the MCC:

- (i) arrange to publish the Bibliography and Environmental History (volumes two and three of this report) as a single volume or two volume set;
- (ii) adopt the new grading system outlined in chapter 5 above and the associated revised schedules of graded buildings, and integrate these schedules to provide a master list of heritage items for the foreseeable future;
- (iii) adopt a policy of nominating all A grade buildings not yet registered as historic buildings to the HBC and a similar policy of preparing and forwarding nomination forms to the Australian Heritage Commission for all A and B grade buildings not yet registered with the Commission, and provide a budget for this work to be done (although it can be done largely in house). The MCC should further resolve to take a leading role in promoting the appropriate integration of heritage lists as a priority in planning for this state;
- (iv) establish criteria and thresholds for the assessment of notable buildings, as discussed in chapter 5 above;
- (v) seek a means to formally recognise all C grade buildings in historic precincts within the Planning Scheme, perhaps through listing in an incorporated document, and adopt a policy of encouraging the maintenance and refurbishment of C grade buildings outside these precincts;
- (vi) adopt a policy of consultation with the National Trust during the assessment of any development in which a tree cited within the Trust's schedule is threatened with damage or removal;
- (vii) assess the recommendations made in the archaeological management plan for the CAD prepared by VAS consultants, and adopt the recommendations made in chapter 5, volume 1 of that report. Council should also purchase a software copy of the extensive data base prepared by the VAS consultants and link it into its own future land use data base;
- (viii) prepare an amendment to the Planning Scheme for future consideration with emphasis upon (a) the listing of additional notable buildings, as discussed in chapter 5 above, (b) additional protection for certain parts of precincts 6, 20 and 24 as discussed in chapter 6 above and (c) making use of the citations for historic precincts cited in chapter 6 above;
- (ix) put into place the data management procedures outlined in chapter 7, including regular reviews of data, the establishment of a computer data base, the establishment of a heritage document library within archives, and effective maintenance of the data itself on a day to day basis;



- (x) establish basic criteria for the preparation of major reports on heritage by consultants, identifying acceptable levels of documentation and appropriate use and recognition of references; defining a standard format; requiring submission of original artwork and a copy of the report on a disc compatible with an MCC-owned computer system; and requiring arrangement of ISBN numbers prior to submission (and identification of the number on final report).
- (xi) prepare an educational kit in concert with Department of Education as discussed in chapter 8 above.

APPENDIX ONE

Melbourne CAD Conservation Study - Building & Element Schedules

1985

Note that this does not include the full extent of the present study area, and excludes Flagstaff Hill and Eastern Hill, including the Parliamentary precinct.



PAGE NO. 00001
12/06/85

GRAEME BUTLER
ARCHITECT
Architectural Historian
21 Alphington Street,
Alphington, Vic. 3078. 481 3094

MELBOURNE CAD CONSERVATION STUDY- BUILDING SCHEDULE

NAME	TYPE	STREET	NUMBER	DATE	VALUE	STREET SCAPE
	Forge, Stables?	A'Beckett Street	041-045	1885-c	D	3
	Warehouse?	A'Beckett Street	047-049	1915c	C	3
	Warehouse?	A'Beckett Street	051-053	1915c	D	3
	Warehouse	A'Beckett Street	056	1905c	D	
	Garage	A'Beckett Street	060-062	1912	E	
McClure & Valentine Warehouse, former	Warehouse	A'Beckett Street	061-069	1871	B	2
Victorian Spiritualists Union	Warehouse	A'Beckett Street	071-073	1854	A	2
	Warehouse	A'Beckett Street	104	1890c	C	
	Warehouse	A'Beckett Street	106-116	1907	D	
Commonwealth Motors, former	Retail, Motor	A'Beckett Street	111-125	1936	B	2
	Factory?	A'Beckett Street	124-126	1925c	D	
	Factory?	A'Beckett Street	127-141	1935c	D	2
Advocate Press Building	Factory, Offices	A'Beckett Street	143-151	1937	B	2
	Factory, Warehouse?	A'Beckett Street	144-154	1925c	E	
Grange Lynne Pty Ltd	Warehouse	A'Beckett Street	185-187	1937-44	B	
White & Gillespie Pty Ltd, former	Factory	A'Beckett Street	190	1935c	C	
	Factory?	A'Beckett Street	199	1930c	D	2
Bill Memorial Home for Men former tobacco factory	Factory	A'Beckett Street	217-219	1889	B	2
Royal Aust. Army Medical Corp. Naval & Military Club, former (1918-)	Drill Hall	A'Beckett Street	235-249	1938	B	2
		Alfred Place	007	1887-	C	
	Warehouse?	Alfred Place	021	1925c	D	
Swinerton Bros & Co Building		Anthony Street	014	1924	D	
Nitre Tavern	Hotel	Bank Place	001-003	1868-	B	
Charter House	Offices	Bank Place	004	1907	C	2
Savage Club		Bank Place	012-016	1884-85	B	2
	Offices	Bank Place	018-020	1906	B	2
Bank House, former	Printing Office	Bank Place	019	1903	D	2
	Warehouse?	Block Place	028	1890c	E	
	Retail, Residential	Bourke Street	002-018	1857-63	C	
	Retail, Residential	Bourke Street	019-021	1901	D	3
New Metro Picture Theatre, former	Cinema	Bourke Street	020-030	1935c	D	
Society Cafe	Restaurant,	Bourke Street	023-029	1901	C	3
State Savings Bank, former	Bank, Residence	Bourke Street	031-033	1906	D	3
	Retail Stores, Cafes	Bourke Street	032-038	1892	C	
Bourke St. East Post Office, former	Retail, Residential	Bourke Street	035-037	1872	C	3
	Retail, Residential	Bourke Street	039-041	1905c	E	
	Retail, Residential	Bourke Street	043	1905c	D	
	Retail, Residential	Bourke Street	051-053	1880c	E	
Crossley's Building	Retail, Residential	Bourke Street	054-062	1848-9	B	2
Salvation Army Temple, former YMCA	Residential, Welfare	Bourke Street	065-073	1890	A	2
	Retail, Residential	Bourke Street	066-070	1865c	D	2
	Retail, Residential	Bourke Street	072-074	1860c	D	2
	Retail, Residence	Bourke Street	075-077	1880c	D	2
Cafe Florentino, (exterior)	Retail, Residential	Bourke Street	078-080	1860-	D	2
A.J. Building	Retail & Caberet	Bourke Street	079-085	1935-6	C	
	Retail, Residential	Bourke Street	082	1853-	D	2

MELBOURNE CAD CONSERVATION STUDY- BUILDING SCHEDULE

NAME	TYPE	STREET	NUMBER	DATE	VALUE	STREET SCAPE
Australian&New Zealand Banking Co.,F.London Chartered	Offices, Bank	Bourke Street Bourke Street	086 088-090	1925c 1870-71	D B	2 2
Long's Chemist,former	Retail,Chemist Warehouse?	Bourke Street Bourke Street	094-098 100-116	1853- 1910c	C E	2
National Hotel,former	Hotel	Bourke Street	110-122	1860c	C	
Eastern Arcade,former(renovation)	Retail Arcade	Bourke Street	131-135	1926	C	
Hoyts Cinema Centre	Cinema,Offices Offices?	Bourke Street Bourke Street	134-144 144-150	1969 1865c	B D	
Malcolm Reid&Co. Ltd.	Offices,Retail	Bourke Street	151-155	1935c	C	2
Patersons Furniture Warehouse,former	Retail,Furniture	Bourke Street	152-160	1934	C	
Paynes Bon Marche P/L	Retail,Offices Retail	Bourke Street Bourke Street	157-163 160-162	1935c 1905c	D D	2
Barnett's Building	Offices Retail,Offices	Bourke Street Bourke Street	164-166 165	1938 1925c	B D	
National Australia Bank,former Australia Felix Hotel	Hotel	Bourke Street	168-174	1860-61	C	3
(Renovation)	Retail,Residential	Bourke Street	171	1868	D #	3
Bourke House	Offices,Retail	Bourke Street	175-177	1925c	D #	3
Morran's Corner Stores,former	Retail,Offices	Bourke Street	179-183	1930c	C	
Rockman's Shoerooms,former	Offices,Retail	Bourke Street	180-182	1935c	C	
Bank of New South Wales,former	Bank	Bourke Street	188	1935c	D	3
Carlton Hotel	Hotel	Bourke Street	190-192	1929	A	3
Hoyts Midcity Cineamas	Cinema,Offices Retail, Residence	Bourke Street Bourke Street	193-199 194-200	1937 1977	C D	
Commonwealth Bank of Australia	Retail, Residential	Bourke Street	201-207	1880c	D #	3
Royal Mail House	Bank	Bourke Street	209-215	1880c	D	3
The Leviathan Clothing Store	Offices, Retail	Bourke Street	219-225	1941	B	
Francis&Co. Chemists,former	Retail,Clothing	Bourke Street	253-267	1963	D	
Roughton's Buildings,former	Retail, Residential	Bourke Street	271-281	1912-13	B	3
Sutton's Pty Ltd,former	Retail	Bourke Street	274-278	1859-	C	2
Buckley & Nunn's Mens Store,former	Retail	Bourke Street	280-282	1913	C	1
Buckley and Nunn's Emporium,former	Retail	Bourke Street	284-288	1914	B	1
G.J. Coles Stores	Retail Store	Bourke Street	288-292	1902	C	1
Buckley & Nunn's Emporium	Retail,Clothing	Bourke Street	294-296	1933	A	2
Diamond House(upper facade),former	Retail	Bourke Street	298-304	1911-12	B	2
Myer Emporium(facade)	Retail	Bourke Street	299-307	1928-40	A	
Public Benefit Bootery,former	Retail	Bourke Street	306-312	1911	C	2
Deva House,former G J Coles&Co.Store	Retail	Bourke Street	313-317	1936	C	
Royal Arcade	Retail	Bourke Street	314-336	1933	A	2
London Stores Ltd.	Retail,Offices	Bourke Street	323-325	1924	C	1
Colest&Garrard	Retail, Offices	Bourke Street	327-329	1925	C	1
	Retail Arcade	Bourke Street	331-339	1869-70	A	
	Offices,Retail	Bourke Street	345-347	1920c	D	2
	Retail	Bourke Street	349-357	1925	C	2
	Offices,Retail	Bourke Street	376-378	1960c	D	
	Offices,Retail	Bourke Street	380-382	1890c	E	
	Retail,Residential	Bourke Street	384-386	1880c	E	

MELBOURNE CAD CONSERVATION STUDY- BUILDING SCHEDULE

NAME	TYPE	STREET	NUMBER	DATE	VALUE	STREET SCAPE
Saracens Head Hotel, former	Hotel	Bourke Street	387-389	1860c	E	
	Offices	Bourke Street	388-390	1925c	D	
Danks & Co., former	Retail	Bourke Street	391-403	1915c	C	
Provincial House	Offices, Retail	Bourke Street	405	1964	D	
	Offices	Bourke Street	414-416	1928	D	3
Rochelle House, former Evans House	Offices, Retail	Bourke Street	415-419	1930	C	
Gothic Chambers	Retail	Bourke Street	418-420	1890-1	C	3
Kaye Butchart & Co. Building	Offices	Bourke Street	421	1859-	B	
Commercial Bank, former	Offices	Bourke Street	422-424	1868c	D	3
Prudential Building	Offices	Bourke Street	433-447	1960	D	
Pearl Assurance House, Former	Offices, Insurance	Bourke Street	449-455	1961	D	
Dalgety House	Offices	Bourke Street	457-477	1965c	D	
Australian & New Zealand Banking Co.	Bank	Bourke Street	460	1965	D	
London Assurance Building, former	Offices	Bourke Street	468-470	1959	B	
Equity Chambers	Offices	Bourke Street	472-478	1931	B	2
Eagle House	Offices	Bourke Street	473	1971	A	
	Offices	Bourke Street	480	1925c	D	2
	Offices	Bourke Street	482	1925c	D	2
Chancery House	Offices	Bourke Street	483-489	1928	D	
New Zealand Insurance Building, Former	Offices	Bourke Street	491-493	1960-	B	
Elder House	Offices	Bourke Street	499-501	1959	C	
BHP Building	Offices	Bourke Street	505-523	1972	B	1
Goldsbrough Mort Wool Store	Offices, Warehouse	Bourke Street	514-526	1862-	A	
ANP Tower & St. James Building	Offices	Bourke Street	527-555	1965-9	B	
ACI House, Former	Office Block	Bourke Street	546-560	1964	B	
Abrahaas, Former Gollin's Building	Offices, Warehouse	Bourke Street	561-563	1902	A	3
	Retail, Residential	Bourke Street	565-569	1869	A	3
Bourke Street West Police Station	Police Barracks	Bourke Street	621-629	1888	B	2
Bourke Street West Police Station Gaol	Gaol (Watchhouse)	Bourke Street	621-629	1881	A	
St. Augustine's Church	Church	Bourke Street	631-653	1870-	A	2
St. Augustine's Church, Hall & School	School	Bourke Street	631-653	1881	D	
Sports House	Offices	Bourke Street	632-634	1920c	D	2
Unity Hall, Australian Railways Union	Hall, Offices	Bourke Street	636-638	1916	B	2
Eliza Tinsley Building, former	Warehouse, Offices	Bourke Street	640-652	1905c	C	2
Sunshine Building	Garage, Warehouse	Bourke Street	654-664	1914	C	2
Hudson's Stores	Warehouse	Bourke Street	655-659	1877..	B	
	Warehouse	Bourke Street	661-667	1877..	D ^a	2
	Warehouse	Bourke Street	666-668	1879	C	2
Melbourne Tramway & Omnibus Co. Building	Offices	Bourke Street	669-675	1890	B	2
RMIT Building 2, Art School	School, Art	Bowen Street	2	1915	D	
Kernot Building, Former Engineering School	School, Engineering	Bowen Street	3	1931	D	
RMIT Building 4	School, Carpentry...	Bowen Street	4	1890	A	
Building 5, RMIT	School	Bowen Street	5	1938	B	2
RMIT Building 6	School	Bowen Street	6	1955	C	
RMIT, Building 7	School, Chemistry	Bowen Street	7	1948	C	2
RMIT Building 9 (Electrical Trade School)	School	Bowen Street	9	1938	B	2
Vesta House	Offices	Carson Place	-	1925c	D	

MELBOURNE CAD CONSERVATION STUDY- BUILDING SCHEDULE

NAME	TYPE	STREET	NUMBER	DATE	VALUE	STREET SCAPE
	House	Casselden Street	017	1877	B	
	Houses (Chinese?)	Celestial Avenue	016-018	1895	C	
	Warehouse	Church Street		1925c	D	
Tullis Hunter Building	Warehouse	Club Lane	-		D	
Craig Williamson Pty Ltd,former	Factory,Warehouse..	Club Lane			D	
	Warehouse	Cohen Place	012		C	
	Offices,Residential	Collins Street	002	1930	A	1
Alcaston House	Offices	Collins Street	004-006	1937-8	A	1
ANZAC House	Residential,Surgery	Collins Street	005-007	1884	B	1
	Residences,Surgery	Collins Street	008	1873	B	1
Portland House	Studios	Collins Street	009	1888	A	1
Grosvenor Chambers	Offices	Collins Street	012	1920-1	A	1
Victor Horsley Chambers	Offices	Collins Street	014-016	1912-13	B	1
Chanonry	Offices	Collins Street	018-022	1959	C	
Coates Building	Club	Collins Street	036-050	1858-83	A	2
Melbourne Club	Row Houses	Collins Street	052-054	1881	C	2
	Offices, Public	Collins Street	056-064	1965	D	
Reserve Bank of Australia	Surgery, Residence	Collins Street	070	1867	A	3
C.B.A. Bank,Former Surgery	Offices	Collins Street	071-073	1924	C	2
Harley House	Town House	Collins Street	072-074	1855-	D	3
Le Louvre	Offices	Collins Street	075-081	1937	C	2
	Offices,Retail	Collins Street	082	1960	D	
OPSM Building	Club	Collins Street	083-087	1929	C	2
Athenaeum Club	Residences,Surgeries	Collins Street	086-088	1873	C	
	Offices	Collins Street	089-101	1962	D	
Conzinc Riotinto of Australia Building,former	Surgeries,Residences	Collins Street	096-098	1879	C	
	Offices	Collins Street	100-104	1955	A	
Gilbert Court	Offices	Collins Street	103-105	1906	D	3
Barrett's Building,former	Offices	Collins Street	107	1926-7	B	3
Francis House	Offices,Retail	Collins Street	109-113	1938	C	3
CBC Bank	Bank,Offices	Collins Street	114	1908	A	2
Professional Chambers	Offices	Collins Street	115-119	1891	B	
Austral Buildings	Offices	Collins Street	120	1960	E	
Vanity Walk (renovation)	Offices	Collins Street	122-136	1905	C	
Independent Hall	Hall	Collins Street	122-136	1867	A	1
Independent Church	Church	Collins Street	133-139	1887-	B	
	Residence,Surgery	Collins Street	140-154	1874	A	1
Scot's Church	Church	Collins Street	141-153	1926-38	A	
Temperance&General Building	Offices	Collins Street	155-157	1960c	D	
	Hall	Collins Street	156-160	1915	B	1
Asseably Hall	Retail,Draperly	Collins Street	162-168	1883-91	B	1
George & Georges,Former Equitable Coop. Society Build.	Offices	Collins Street	163-165	1926	C	1
Chartres House	Theatre,Offices	Collins Street	167-173	1912-3	A	1
Auditorium Theatre, Former	Church	Collins Street	170-174	1846-61	A	1
Baptist Church	Offices	Collins Street	175-177	1926-7	C	1
Kurrajong House	Offices	Collins Street	176-180	1889	B	1
Martin&Pleasance Building	Residential,Retail	Collins Street	179	1855-	E	
Melbourne Theosophical Society	Offices	Collins Street	181-187	1937	A	1

MELBOURNE CAD CONSERVATION STUDY- BUILDING SCHEDULE

NAME	TYPE	STREET	NUMBER	DATE	VALUE	STREET SCAPE
Clyde House	Offices	Collins Street	182	1915	C	1
Melbourne Athenaeum Offices&Library	Offices,Library	Collins Street	184-192	1885	A	1
Melbourne Athenaeum Theatre(interior)	Theatre	Collins Street	184-192	1924	B	
	Retail, Residence	Collins Street	189	1854-	D	
Regent&Plaza(part) Theatres,Former	Cinema	Collins Street	191-197	1929	A	1
Wales Corner	Offices, Bank	Collins Street	221-231	1964-	D	
Albany Court,Former	Offices	Collins Street	228-232	1935c	D	1
Age Building,former	Offices	Collins Street	233-235	1959	D	
	Offices	Collins Street	234-238	1935c	C	1
The Age Building	Offices	Collins Street	239	1925c	D	
Howey Court	Offices	Collins Street	240-242	1915c	C	1
Fourth Victoria Building,Former	Offices	Collins Street	241-245	1912	B	
Howey House	Offices	Collins Street	244-248	1915c	C	1
Newspaper House,Former	Offices	Collins Street	247-249	1932-3	B	
Lyric House,Former	Offices	Collins Street	250	1931	C	1
Kodak House	Offices	Collins Street	252	1935	B	1
	Offices	Collins Street	256	1915c	D	
Centreway Arcade	Retail, Arcade	Collins Street	259-263	1913	B	
Australia Hotel	Hotel	Collins Street	262-270	1939	B	2
Bank of Adelaide,former	Bank	Collins Street	265-269	1962	E	
National Bank	Offices, Bank	Collins Street	271-279	1927	B	2
Victorian Tourist Bureau,former	Offices,Public	Collins Street	272-274	1939	D	2
Allan's Music Building	Retail,Offices	Collins Street	276-278	1956-7	C	2
Block,The	Retail Arcade	Collins Street	280-286	1890-	A	1
Royal Banking Chambers	Bank&Offices	Collins Street	287-301	1939-41	B	2
Block Court,former Atheneum Club	Retail,Club	Collins Street	288-292	1891	B	1
Dumas House,former Dunkling's Building	Offices	Collins Street	294-296	1915	B	1
Altson's Corner,former	Offices,Retail	Collins Street	298-304	1904	D	1
Colonial Mutual Life Building	Offices	Collins Street	308-334	1963	C	
Embank House	Offices	Collins Street	319-325	1965	C	
Commercial Bank of Australia (Dome&Chamber)	Offices, Bank	Collins Street	335-339	1891-93	B	2
Commercial Bank of Australia (facade)	Bank,Offices	Collins Street	335-339	1939	B	2
Commercial Banking Co.of Australia(Facade)	Offices,Bank	Collins Street	335-339	1939	B	2
Hardy Brothers Jewellery Store	Retail/Offices	Collins Street	336-338	1933c	E	
Burns House	Offices	Collins Street	340-342	1930	D	
Westpac Travel	Offices	Collins Street	341-343	1927	C	2
Mercantile Chambers,former	Offices, Bank	Collins Street	345-349	1889	A	2
Stock Exchange House	Offices	Collins Street	351-357	1968	B	
Melbourne Stock Exchange,Former	Offices	Collins Street	376-380	1891	A	1
E S & A Bank (former)	Bank	Collins Street	382-390	1884	A	1
Goode House	Offices	Collins Street	389-399	1893	A	1
Bank of Australasia (former)	Bank	Collins Street	394-398	1875-	A	1
London and Lancashire Building	Offices	Collins Street	400-402	1865...	B	1
Trustees Chambers	Offices	Collins Street	401-403	1937	B	1
Guardian Royal Exchange Assurance,former	Offices	Collins Street	404-406	1958-61	C	2
Aldersgate House	Offices	Collins Street	405-407	1923	B	1
AUC Office	Offices	Collins Street	409-413	1944	C	1
Alliance Insurance Co.	Offices	Collins Street	410	1956	B	2

MELBOURNE CAD CONSERVATION STUDY- BUILDING SCHEDULE

NAME	TYPE	STREET	NUMBER	DATE	VALUE	STREET SCAPE
FAI Building,Former State Accident Insurance Building	Offices	Collins Street	412	1941	B	2
	Offices	Collins Street	415-417	1920c	D	
Capel Court,Former A.M.P. Building	Offices	Collins Street	419-429	1931	A	1
Temple Court	Offices	Collins Street	422-428	1923-4	B	
Royal Insurance	Offices	Collins Street	430-444	1965	B	
National Mutual Life Centre	Offices	Collins Street	435-455	1965	C	
MLC Building	Offices	Collins Street	454-458	1963	C	
	Offices	Collins Street	464-466	1910c	C	
Olderfleet,The	Offices	Collins Street	473-477	1891	A	1
Record Chambers	Offices	Collins Street	479-481	1888	A	1
State Accident&Motor Car Insurance Office	Offices,Public	Collins Street	480-490	1965	B	
New Zealand Insurance Building,Former	Offices	Collins Street	483-485	1888	A	1
Wool Exchange Building,Former	Offices	Collins Street	487-495	1891	A	1
Rialto,The (former)	Offices, Warehouses	Collins Street	497-503	1889-90	A	1
New Zealand Loan&Mercantile Agency Co.,Former	Offices	Collins Street	538-544	1910	A	
McPhersons Pty. Ltd Building,Former	Retail,Offices	Collins Street	546-566	1934-7	A	
State Savings Bank of Victoria	Bank	Collins Street	615-623	1923	B	
	Warehouse	Corrs Lane	014	1880c	D	
Stable,Former	Stable	Corrs Lane	028	1885c	D	
MCC Substation	Substation	Crombie Lane		1930c	D	
	Offices	Crossley Street	017-025	1960c	D	
	Warehouse	Crossley Street	030		E	
Markillie's Hotel(part)	Hotel	Downie Street		1920c	D	
Seakist House	Warehouse	Downie Street	006-016	1960c	D	
	Factory,Warhouse	Drewery Lane	009-013	1890	C	3
Sniders&Abrahams P/L Building	Factory	Drewery Place	-	1910	B	
	Warehouse	Drewery Place	018	1890c	D	3
	Factory,Warehouse?	Drewery Place	022	1910c	D	3
	Warehouse	Duckboard Place		1885c	D	
	Toilet	Elizabeth Street	-	1914c	C	
Municipal Toilets	Hotel	Elizabeth Street	001-005	1956	B	
Hosies Hotel	Offices	Elizabeth Street	017-019	1927	D	2
Excelsior House	Offices	Elizabeth Street	021-023	1889	B	2
Elizabeth Chambers	Retail	Elizabeth Street	025	1889	D	2
Universal House	Offices, Retail	Elizabeth Street	028-032	1939	B	2
Australian Natives Association Building(renovation)	Offices	Elizabeth Street	034-036	1935c	C	2
Carlow House	Retail,Offices	Elizabeth Street	055-057	1902-	D	2
Friendly Societies House	Offices,Warehouses	Elizabeth Street	059-065	1911	B	2
Brooks Chambers	Offices,Retail	Elizabeth Street	084-086	1911	D	
Alexander's Building	Retail,Offices	Elizabeth Street	088	1938c	D	
	Retail,Residential	Elizabeth Street	090	1861	E	
Beehive Building	Offices,Retail	Elizabeth Street	092-094	1935	B	
Block Arcade	Retail Arcade	Elizabeth Street	096-102	1892-	A	2
Hotel London	Hotel	Elizabeth Street	097-099	1911	C	2
	Offices	Elizabeth Street	101-103	1911	D	2
	Offices, Retail	Elizabeth Street	104-106	1925c	D	2

MELBOURNE CAD CONSERVATION STUDY- BUILDING SCHEDULE

NAME	TYPE	STREET	NUMBER	DATE	VALUE	STREET SCAPE
	Offices,	Elizabeth Street	105	1930c	D	2
Angus and Robertson's, former McLean Brothers & Rigg Ltd.	Retail	Elizabeth Street	107-113	1889	B	2
Brashs Building	Offices, Retail	Elizabeth Street	108-110	1920c	D	2
City of Melbourne Buildings	Offices, Retail	Elizabeth Street	112-118	1888	A	2
Paton Building	Retail, Offices	Elizabeth Street	115-117	1905	A	2
Elizabeth Arcade	Offices, Retail	Elizabeth Street	119-125	1968	D	
Hoddle House	Offices	Elizabeth Street	124-126	1935c	D	
	Retail, Offices	Elizabeth Street	136-140	1885c	D	3
		Elizabeth Street	142-146	1885c	D	3
Royal Arcade	Retail, Offices	Elizabeth Street	148-150	1901	C	3
General Post Office (part)	Post Office	Elizabeth Street	188-218	1858-89	A	
	Retail, Residential	Elizabeth Street	195	1880c	E	
Wardrop's Buildings	Offices, Retail	Elizabeth Street	197-199	1914	D	3
National Australia Bank (former Commercial Banking Co)	Bank?	Elizabeth Street	201-209	1919-45	D*	3
	Offices, Retail?	Elizabeth Street	211-213	1923	D	3
Edinburgh Chambers	Retail	Elizabeth Street	215-217	1867-69?	C	3
Post Office Plaza	Plaza, Retail	Elizabeth Street	218	1965c	C	
	Retail	Elizabeth Street	249-259	1889	D	2
	Retail	Elizabeth Street	261	1898	C	2
Michael's Corner Building	Retail	Elizabeth Street	265-269	1916	B	2
	Retail, Residential	Elizabeth Street	283-285	1860c?	D*	3
	Retail, Residential	Elizabeth Street	287-289	1905c?	D	3
	Retail	Elizabeth Street	291-293	1920?	D *	3
	Retail, Residential	Elizabeth Street	295-297	1925	D	3
	Retail, Residential	Elizabeth Street	299	1890c?	C	3
	Retail, Residential	Elizabeth Street	303-305	1915c	D *	3
	Warehouse	Elizabeth Street	307-311	1925c	D*	3
Hotel Elizabeth	Hotel	Elizabeth Street	315-321	1935c	D	
	Retail, Residential	Elizabeth Street	323	1861pre?	E	
Railway Club Hotel, former	Hotel	Elizabeth Street	325-327	1878c	E	
Catholic and Central Library Building	Offices, Retail	Elizabeth Street	341-345	1923	D	2
	Offices, Retail	Elizabeth Street	347	1923	D	2
	Retail, Offices	Elizabeth Street	349-351	1929c	D	2
A.N.Z. Bank, former Union Bank of Australia	Bank, Offices	Elizabeth Street	353-357	1928	C	2
Argus Building	Offices (Newspaper)	Elizabeth Street	365-393	1926	C	
Bulley & Co. Building, former Federal Club Hotel	Hotel	Elizabeth Street	380	1875-	C	2
Bank of Australasia, former	Bank	Elizabeth Street	384	1883	B	2
	Factory?	Elizabeth Street	390	1920c	E	
Rhodes Motors, former	Retail, Offices	Elizabeth Street	399-411	1915c	D	
	Retail, Offices	Elizabeth Street	413-417	1925c	D	
	Retail, Residential	Elizabeth Street	419-435	1872	D	
		Elizabeth Street	422-430	1860c?	E	
	Offices	Elizabeth Street	437-439	1960c	D	
Royal Saxon Hotel, former	Hotel, Retail	Elizabeth Street	441-447	1859	C	
English Scottish & Australian Banking Co., former	Bank	Elizabeth Street	453-457	1958-	B	
Commonwealth Bank	Bank	Elizabeth Street	463-471	1960c	C	

MELBOURNE CAD CONSERVATION STUDY- BUILDING SCHEDULE

NAME	TYPE	STREET	NUMBER	DATE	VALUE	STREET SCAPE
Hendersons Building	Retail, Residential	Elizabeth Street	467-471	1856c	C	2
		Elizabeth Street	472	1910c	E	
	Row Houses, Retail	Elizabeth Street	473-481	1872c	C	2
	Office, Warehouse?	Elizabeth Street	478	1905c	E	
	Warehouse	Elizabeth Street	483-485	1935c	D	
	Retail, Residential	Elizabeth Street	487	1860c?	E	
	Offices, Residential	Elizabeth Street	489-499	1975	B	
	Warehouse?	Elizabeth Street	490-494	1905c	E	
	Hotel	Elizabeth Street	500-504	1860c?	D	
	Bank?	Elizabeth Street	501-503	1880c?	D	
Young Womens Christian Association	Retail, Motor	Elizabeth Street	506-516	1920c	E	
	Warehouses	Evans Lane	003	1915c?	D	
	Carpark	Exhibition Street	011-037	1965c	C	
	Offices	Exhibition Street	030-040	1935c	C	2
	Offices, Retail	Exhibition Street	041-043	1940c	C	
	Offices	Exhibition Street	049-051	1965c	D	
	Offices	Exhibition Street	053-055	1927	C	
	Offices	Exhibition Street	096-102	1965	D	
	Offices, Hall	Exhibition Street	104-110	1935	C	
	Hotel, Residential	Exhibition Street	113-149	1963	C	
Kelvin Hall, former Union Fidelity Trustee Co. Centenary Hall, former Southern Cross Hotel. Morris House (former)	Offices	Exhibition Street	114-122	1925	D	
	Retail, Residential	Exhibition Street	159-161	1865c	C	2
	Retail, Residential	Exhibition Street	163	1870-74c	D	2
	Retail, Residential	Exhibition Street	165-167	1865c?	D	2
	Retail, Residential	Exhibition Street	181-187	1872	D	2
	Retail, Residential	Exhibition Street	189-195	1885c	D	2
	Retail, Residential	Exhibition Street	199-225	1886	B	2
	Theatre	Exhibition Street	228-240	1928	B	
	Theatre	Exhibition Street	231-235	1885c	D	2
	Retail, Residential	Exhibition Street	246-254	1930c	D	
Her Majesty's Theatre Comedy Theatre	Warehouse, Offices?	Exhibition Street	258-264	1930c	D	2
	Factory, Warehouse?	Exhibition Street	265-273	1935c	D	
	Retail, Motor	Exhibition Street	266	1891	B	2
	Warehouse	Exhibition Street	272-274	1910-11	C	2
	Factory, Retail	Exhibition Street	275-285	1860	B	
	School, Church	Exhibition Street	276	1940c	E	
	Factory?	Exhibition Street	280-282	1854-	C	2
	Hotel	Exhibition Street	295-301	1935c	D	
	Retail,	Exhibition Street	303	1851pre	E	
	Shop and Dwellings	Exhibition Street	309	1903	C	
P.M. Hong Nam Building Hebrew Congregational Synagogue&School	Retail, Residence	Exhibition Street	353	1935c	D	3
	Factory?	Exhibition Street	355-357	1886	D	3
	Office & Warehouse	Exhibition Street	359	1880c	D	3
	House	Exhibition Street	-	1916	B	
	House	Exhibition Street, at	-			
	Toilet	Lonsdale				
	Factory?	Exploration Lane	012	1925c	D	
	Warehouse	Fleeting Place	-	1868	B	
	Warehouse	Flinders Court	005-007	1860c?	C	

MELBOURNE CAD CONSERVATION STUDY- BUILDING SCHEDULE

NAME	TYPE	STREET	NUMBER	DATE	VALUE	STREET SCAPE
Milton House	Surgery, Residence	Flinders Lane	021-025	1901	A	
	Warehouse	Flinders Lane	031-035	1910c	D	3
	Warehouse	Flinders Lane	037-045	1915c	D	3
	Warehouse	Flinders Lane	049-053	1905c	D	3
Dominion House	Offices	Flinders Lane	055-059	1930c	D	3
	Warehouse	Flinders Lane	084-094	1920c	C	
	Warehouse	Flinders Lane	087-089	1910c	D	
Duckboard House	Factory, Warehouse?	Flinders Lane	091-093	1940c	D	
	Warehouse	Flinders Lane	095-101	1905c	D	3
	Warehouse?	Flinders Lane	103-105	1880c?	D *	3
Lisscraft House	Warehouse	Flinders Lane	107-109	1925c	D	2
	Warehouse	Flinders Lane	111-119	1925c	D	2
	Warehouse?	Flinders Lane	121-123	1915c	D	2
Higson's Building	Warehouse	Flinders Lane	125-127	1912	B	2
	Warehouse	Flinders Lane	129-131	1858	A	3
	Warehouse?	Flinders Lane	133-135	1910c	D *	3
Bank of New South Wales	Bank	Flinders Lane	137-139	1924	D	2
Metcalfe Building	Warehouse	Flinders Lane	145-149	1902	A	2
	Warehouse	Flinders Lane	161-163	1910c	C	3
Richard Allen & Sons P/L	Warehouse	Flinders Lane	164-170	1910c	C	3
McDonald & Co Ltd Building	Warehouse	Flinders Lane	165	1924	C	3
	Warehouse	Flinders Lane	167-173	1901	B	2
	Offices	Flinders Lane	175-177	1940c	D	2
Qualeta House, former	Warehouse	Flinders Lane	179-181	1911	C	2
	Offices	Flinders Lane	183-185	1920c	D	2
Toronto House	Offices	Flinders Lane	187	1940c	C	2
Yoffa House	Warehouse	Flinders Lane	189-195	1906	C	2
Invicta House	Offices	Flinders Lane	226-232	1925c	D	2
Manchester House	Warehouse, Offices	Flinders Lane	234-236	1912	B	2
	Offices?	Flinders Lane	237-239	1935c	D	1
	Offices,	Flinders Lane	238-244	1870-?	C	2
Bible Society	Warehouse	Flinders Lane	241-243	1898	D	1
Royston House	Offices	Flinders Lane	247-251	1899	A	1
Centre House	Offices	Flinders Lane	252-254	1890c	D	2
	Warehouse, Offices	Flinders Lane	253-255	1900	B	1
	Warehouse, Offices	Flinders Lane	257-265	1899	B	1
	Offices	Flinders Lane	258-260	1930	A	2
Majorca Building	Offices	Flinders Lane	258-260	1930	A	2
Lane Building, The	Warehouse, Offices	Flinders Lane	267-275	1899	C	1
Tomasetti Building, former Desgraves Mill	Warehouse	Flinders Lane	277-279	1905	A	1
Reliance House	Offices, Warehouse	Flinders Lane	301-311	1914	D	2
Leicester House	Warehouse	Flinders Lane	302-306	1886-	B	2
	Warehouse	Flinders Lane	308	1909 ?	C	2
	Retail, Offices	Flinders Lane	310	1919	D	2
	Retail, Offices	Flinders Lane	312-314	1883	C	2
Flinders Chambers	Retail, Offices	Flinders Lane	312-314	1883	C	2
Londex House	Offices, Retail	Flinders Lane	313-315	1917	D	2
	Office, Warehouse	Flinders Lane	316	1884	D *	2
Tasmania House	Retail, Offices	Flinders Lane	317-323	1923	D	2
Selby House	Offices	Flinders Lane	318-324	1911	D	2

MELBOURNE CAD CONSERVATION STUDY- BUILDING SCHEDULE

NAME	TYPE	STREET	NUMBER	DATE	VALUE	STREET SCAPE
Lane Centre	Retail,Offices	Flinders Lane	325-331	1907	D	2
Boydex House	Offices,Warehouse	Flinders Lane	333	1912	C	2
Insurance Centre	Offices	Flinders Lane	335-339	1929	D	2
Reid House(rear)	Warehouse	Flinders Lane	341-347	1909	C	2
	Warehouse,Offices	Flinders Lane	349-351	1869...	D	2
	Offices	Flinders Lane	353-355	1915c	D	2
Tavistock House (Renovation)	Hotel	Flinders Lane	383-387	1906	B	
Gordon Buildings,former	Offices?	Flinders Lane	384-386	1884-91	C	
Spencer Motel (Part)	Warehouse	Flinders Lane	578-584	1886?	E	
	Offices	Flinders Street	026-030	1910c	E	
Herald-Weekly Times Building	Offices,Newspaper	Flinders Street	032-074	1923-29	B	2
VCA Building	Offices	Flinders Street	076-080	1930c	D	2
	Offices	Flinders Street	092-094	1910c	D	3
Drean Building	Offices	Flinders Street	096-098	1910c	D	3
Campbell House	Offices	Flinders Street	100-102	1915c	D	3
	Offices,Warehouse	Flinders Street	122-128	1910c	D	2
ANA House	Offices	Flinders Street	130-132	1910c	C	2
Epstein House	Offices,Retail	Flinders Street	134-136	1930c	C	2
Stott House	ffices	Flinders Street	138-140	1905c?	D	2
	Offices?	Flinders Street	142-146	1880c	D	2
Duke of Wellington	Hotel	Flinders Street	148	1850	B	2
State Theatre,Former	Theatre	Flinders Street	150-162	1929	A	2
Masonic Club	Club,Offices,Retail	Flinders Street	164-170	1927	B	2
Chelsea Cinema,former Magestic Theatre	Cinema	Flinders Street	172-178	1912--	E	
Ball and Welch Building	Retail-Offices-W'hse	Flinders Street	180-188	1899-	B	2
Commercial Travellers Association Building (former)	Club, Offices	Flinders Street	192-190	1899-	B	2
Metropolitan Gas Co.,Former	Offices	Flinders Street	194-196	1892	B	2
	Warehouse	Flinders Street	210-212	1855c	D	2
	Warehouse	Flinders Street	214-216	185A-	C	2
Young and Jackson's Hotel(part)	Warehouse	Flinders Street	218-220	1855c	D	2
	Warehouse	Flinders Street	224-226	1856-	C	2
Port Phillip Arcade	Retail Stores	Flinders Street	230-236	1961	D	
State Electricity Commission Building		Flinders Street	238-242	1932c-	C	
	Offices	Flinders Street	244-248	1930c	D	2
Lincoln Stewart Building,former	Offices	Flinders Street	248-250	1905c?	D	2
Mutual Store,former	Offices,Retail	Flinders Street	256-262	1892	B	2
	Offices,Retail	Flinders Street	268	1905	B	2
Rocke Toapsitt Building,former	Warehouse,Offices	Flinders Street	292-298	1908	C	
Commercial Travellers Association Building,former	Club	Flinders Street	318-324	1913	A	2
Commerce House	Offices	Flinders Street	326-332	1913	C	2
Robert Reid&Co Building	Offices,Warehouse	Flinders Street	334-340	1909	D	2
Federation Insurance Ltd	Offices	Flinders Street	342-348	1955	C	2
Fox & Hounds Hotel,former Harvest Home	Hotel	Flinders Street	350-358	1851c-	D	
Fletcher Jones	Offices,Warehouse	Flinders Street	360-372	1875?	C	
Holyan House	Warehouse	Flinders Street	390-398	1858	A	2
Melbourne Customs House (Stage 1)	Offices	Flinders Street	424	1856-75	A	1

MELBOURNE CAD CONSERVATION STUDY- BUILDING SCHEDULE

NAME	TYPE	STREET	NUMBER	DATE	VALUE	STREET SCAPE
Russell House, former	Offices	Flinders Street	452-460	1925c	D	
Willis's Buildings	Retail, Residential	Flinders Street	488-490	1860c?	D	
Bank of N.S.W. (Former)	Bank, Offices	Flinders Street	502-504	1911-12	A	2
Waterside Hotel	Hotel	Flinders Street	508-510	1928c?	C	3
Flanders Trading	Retail, Residential?	Flinders Street	512-514	1925c?	D	3
	Offices, Retail	Flinders Street	516-518	1880c	D	3
State Savings Bank, former	Bank	Flinders Street	520-522	1912	C	3
	Warehouse, Offices	Flinders Street	552-554	1875c?	E	
Baltic Import Co Building	Retail, Residential	Flinders Street	556-560	1862-?	D	2
Markillies Hotel	Hotel	Flinders Street	562-564	1915-	B	2
Mack's Hotel	Hotel	Franklin Street	034-036	1854	A	
	Warehouse?	Franklin Street	063-067	1915c?	C	2
Currie and Richards Building	Warehouse, Factory	Franklin Street	079-081	1875	A	2
Strait Building	Factory, Warehouse?	Franklin Street	096-102	1895c	C	
	Retail, Residential	Franklin Street	108	1885c?	E	
	Factory, Warehouse?	Franklin Street	110-112	1935c	D	
Preston Motors Building, former	Retail, Motor	Franklin Street	114-124	1925c	D *	3
Hat factory, former	Factory	Franklin Street	126-130	1885c?	D *	3
QPSM Building	Warehouse	Franklin Street	132-140	1899c	D	3
	Stables?	Franklin Street	139-141	1860c?	E	
	Row House	Franklin Street	142	1885c	D	2
	Row Houses	Franklin Street	144-146	1867c	D	2
	Retail (tyres)	Franklin Street	148-152	1965c	C	
R.M.I.T. Annexe Building	Warehouse, Factory	Franklin Street	167-173	1927	D	
	Offices	Franklin Street	213	1930c	D	
	Factory	Franklin Street	215	1925c?	D	
	Factory, Warehouse?	Franklin Street	225	1935c	D	
	Retail, Residential	George Parade	027	1880c?	E	
MCC Sub-station	Substation	George Parade	029	1935c	D	
	Warehouses	Goldie Place	004-006	1888	B	3
	Warehouses	Goldie Place	014-016	1920c	D *	3
	Warehouse, Factory?	Goldie Place	018-020	1920c	D *	3
	Factory?	Gorman Alley	-	1905c	E	
	Warehouse	Gregory's Lane	-		D	
	Warehouse?	Gregory's Lane	-	1870c?	D	
	Factory	Guildford Lane	011-013	1910c	? D	2
MCC Substation	Substation	Guildford Lane	014	1947?	D	2
	Warehouse/Factory	Guildford Lane	015-021	1915	D	2
	Warehouse	Guildford Lane	016-018	1912c	D	2
	Factory	Guildford Lane	020-024	1915	D	2
	Factory, Warehouse?	Guildford Lane	023-027	1890c	D	2
	Warehouse	Guildford Lane	029-031	1915c?	D	2
	Factory	Guildford Lane	030	1890c?	D*	2
	Warehouse	Guildford Lane	032-034	1909	D	2
Regency House	Factory	Guildford Lane	033-035	1924	D	2
	Warehouse	Hardware Street	001-011	1925c	D *	2
	Warehouse	Hardware Street	013-015	1920c	D	3
Cyclone House	Offices	Hardware Street	017-021	1930c	D	3

MELBOURNE CAD CONSERVATION STUDY- BUILDING SCHEDULE

NAME	TYPE	STREET	NUMBER	DATE	VALUE	STREET SCAPE	
Dyvon's Buildings	Offices	Hardware Street	023-025	1930c	D #	3	
	Offices	Hardware Street	027-031	1925c	D #	3	
	Warehouse	Hardware Street	055-057	1887	D #	2	
	Warehouse	Hardware Street	060-066	1890c	C		
	Warehouses	Hardware Street	063-077	1889	A	2	
	Warehouses	Hardware Street	106-112	1890c	C		
	Warehouse	Hardware Street	107-109	1890c?	E		
	Warehouse	Hardware Street	111-113	1915c?	E		
	Warehouses	Hardware Street	115-123	1915c	D		
	Warehouse	Heape Court	-	1856 pre	B		
	Warehouse	Heape Court	-	1870c?	C		
	Warehouse	Heape Court (rear Elizabeth St)	-	1854c	C		
	Chung Wah Cafe, former	Warehouse	Heffernan Lane	011	1891	C	
Neos Cosmos	Warehouse	Heffernan Lane	014-018	1890c	D		
	Warehouse?	Heffernan Lane	026-032	1930c	D		
	Warehouse	Highlander Lane	006-008	1854	C	3	
Leroy Buildings	Warehouse	Highlander Lane	010-014	1907	D	3	
	Warehouse	Higson Lane	-	1920c?	D		
	Warehouse	Higson Lane	-	1925c	D		
	Warehouse	Hosier Lane	007-009	1900c	E		
	Warehouse	Hosier Lane	011-013	1880c?	D		
	Warehouse	King Street	012-020	1917	C	2	
Doyles Free Stores	Warehouses	King Street	022-024	1873	A	2	
Melbourne Shipping Exchange, former	Offices	King Street	025	1887	D		
	Warehouse	King Street	026-032	1911	D	2	
Melbourne Steamship Building	Offices	King Street	027-031	1913	B		
Gladstone Chambers	Offices, Warehouse	King Street	042-044	1883	C	1	
	Warehouse, Offices	King Street	046-052	1859	A	1	
Victorian Butter Factories Co-operative B'ldg. (former)	Factory, Offices	King Street	054-060	1938	B	1	
York Butter Factory	Warehouse, Offices	King Street	062-066	1855	B	1	
	Offices	King Street	068-070	1898c	C	1	
Brown's Hotel (former)	Hotel	King Street	099	1867??	C		
	Warehouse	King Street	115-129	1883c-	C	2	
	Offices, Exchange	King Street	120-138	1913-14	B	2	
	Residential Hotel	King Street	131-135	1925	C		
	Warehouse, Offices	King Street	171-173	1923	D		
	Offices	King Street	181-183	1940c	E		
	Retail, Residential	King Street	184-186	1880c	E		
	Warehouse, Offices	King Street	188-190	1925c	D		
	Warehouse, Retail	King Street	193-195	1880c	E		
	Factory	King Street	197-199	1925c	D		
	Factory	King Street	203-207	1913	D #	3	
	Great Western Hotel	Hotel	King Street	204-208	1864-	D	
		Offices?	King Street	209-211	1910c	D #	3
		Factory	King Street	212-224	1935c	D	
		Offices	King Street	232	1905c	D	

MELBOURNE CAD CONSERVATION STUDY- BUILDING SCHEDULE

NAME	TYPE	STREET	NUMBER	DATE	VALUE	STREET SCAPE
City Lodge	Hotel, Private	King Street	233-237	1955c	D	
	Warehouses	King Street	234-240	1858	A	1
A.N.Z. (former E S & A)	Bank	King Street	239-241	1884	B	
	Warehouses	King Street	242-244	1854-5	B	1
Kilkenny Inn	Hotel	King Street	248-250	1914	A	
Paramount Film Services Building, former	Offices	King Street	256-260	1930c	D	
	Retail, Residential	King Street	273-275	1873	D	3
Golden Age Hotel	Hotel	King Street	279-287	1878c	D	3
Melbourne School of Decoration	Warehouse	King Street	295-299	1915c	D	3
	Factory, Printery ?	King Street	300	1935c	D	
Melbourne School of Decoration	Factory, Offices?	King Street	307-309	1905c	D	3
	Warehouses	King Street	310-316	1889	C	
	Retail, Residence	King Street	328-330	1851	A	
Zander's Bond Store, Block C	Warehouse	King Street (rear of)	022-024	1887	C	
	Warehouse	Knox Place East.	-	1910c	D +	3
Caretaker's Residence, Royal Society	House	La Trobe Street	006	1869	C	
Royal Society of Victoria		La Trobe Street	008	1858	A	
Commonwealth Centre	Offices, Public	La Trobe Street	011-039	1958-66	C	
	Hall & Gymnasium	La Trobe Street	030-034	1872	C	2
	Stable,	La Trobe Street	036-040	1876	C	2
	Retail Stores	La Trobe Street	040-044	1915	D	2
	Factory, Coach	La Trobe Street	046-050	1868	C	2
Ambulance Service	Offices, Garage	La Trobe Street	058-060	1955c	D	
Prince Patrick Hotel, former	Hotel	La Trobe Street	095	1860	D	
	Factory	La Trobe Street	105	1935c	D	
	Retail, Residential	La Trobe Street	109-111	1851pre?	D	
	Factory, Warehouse	La Trobe Street	113	1910	D	
	Factory	La Trobe Street	115	1939c	D	
E.M. Tilley Buildings	Offices	La Trobe Street	123-131	1935-47	D	
RMIT Building 1, former Working Mens College	School	La Trobe Street	124-126	1885-91	A	1
Forester's Hall, former	Hall	La Trobe Street	168-170	1889	B	
La Trobe Library	Library	La Trobe Street	179	1952	C	2
	Warehouse	La Trobe Street	279-283	1885	E	
	Factory	La Trobe Street	285-287	1913	D	
Duke of Kent Hotel, former	Hotel	La Trobe Street	293-299	1929	C	
Kosciuszko House	Warehouse	La Trobe Street	307-313	1935c	D	
Welsh Church	Church	La Trobe Street	320	1871	B	
	Factory	La Trobe Street	323-331	1925c	D	3
	Retail, Residential	La Trobe Street	333-335	1880-99	D +	3
	Retail, Motor	La Trobe Street	334-336	1927c	E	
	Warehouse	La Trobe Street	337-339	1915c	D	
Gypsum House	Offices	La Trobe Street	348-358	1968	C	
	Factory	La Trobe Street	374-384	1935c	D	
La Trobe House, former	Warehouse	La Trobe Street	383	1925c	E	
6 J Coles Warehouse	Warehouse	La Trobe Street	394-400	1925c	C	
	Factory	La Trobe Street	408-418	1901-18	D	
	Warehouse	La Trobe Street	450-454	1935c	D	
	Warehouse	La Trobe Street	456-458	1892c?	E	

MELBOURNE CAD CONSERVATION STUDY- BUILDING SCHEDULE

NAME	TYPE	STREET	NUMBER	DATE	VALUE	STREET SCAPE
	Warehouse	La Trobe Street	460-462	1920c	E	
	Warehouse	La Trobe Street	469-	1890c	D	
	Warehouse	La Trobe Street	477	1890c	B	2.
	Offices, Warehouse	La Trobe Street	479-483	1955c?	D	
	Factory	La Trobe Street	485-489	1915c	E	
Glenwill Building	Warehouse	La Trobe Street	488-494	1912c?	C	
	Warehouse, Factory?	La Trobe Street	491-495	1905c	E	
	Factory, Offices	La Trobe Street	497-499	1911	D	
	Factory	La Trobe Street	510-516	1925c	D	3
	Warehouse?	La Trobe Street	520	1925c	D	3
	Factory?	La Trobe Street	526-530	1925c?	D	3
Henry Berry & Co Factory, former	Factory	La Trobe Street	529-533	1925c	D	2
Melbourne Junior Technical School, former	School	La Trobe Street	537-555	1912	A	2
William Angliss Food Trades School	School	La Trobe Street	557-577	1940	D	2
	Row Houses	Leichardt Street	015-019	1860c?	E	
Gordon House, former Our Improved Dwelling & Lodging House	Housing, Welfare	Little Bourke Street	024-038	1884	A	2
	Factory?	Little Bourke Street	027-035	1912	D	2
	Factory	Little Bourke Street	037-041	1920c	D	2
	Warehouse	Little Bourke Street	040-044	1910c	D	2
Police Station, former	Police Station?	Little Bourke Street	043	1900c	C	2
	Factory	Little Bourke Street	054	1920c	D	
	Warehouse	Little Bourke Street	093	1910c	D	
	Factory	Little Bourke Street	105	1890c	D	2
	Warehouses	Little Bourke Street	107-109	1905c	D	2
Chinese Mission Church, former Sun Kun Lee	Church	Little Bourke Street	108-110	1894	B	1
Ancient Times House	Warehouse	Little Bourke Street	112-114	1887	A	1
	Warehouse	Little Bourke Street	116-118	1915c	D	2
	Warehouses	Little Bourke Street	119-121	1902	D	2
	Retail, Residential	Little Bourke Street	120-122	1910c	D*	2
Anglican Chinese Mission Church	Church	Little Bourke Street	123-125	1902	B	2
Alcocks & Co	Factory, Billiard	Little Bourke Street	142-160	1888	C	
Methodist Mission Church	Church	Little Bourke Street	196	1872	B	1
	Retail, Residential	Little Bourke Street	198	1895c	D	1
Nampon Soon, Chinese Joss House	Retail, Residential	Little Bourke Street	200-202	1862	A	1
	Retail, Residential	Little Bourke Street	206	1901	D	
	Retail Store	Little Bourke Street	209-225	1937c?	C	
	Retail, Residential	Little Bourke Street	212-220	1883	D	
	Warehouse	Little Bourke Street	227-233	1915c	D	
	Retail, Residential	Little Bourke Street	232-238	1895	D	
	Warehouse	Little Bourke Street	271-281	1915c	D	
	Warehouse	Little Bourke Street	283-285	1915c	D	3
	Warehouse	Little Bourke Street	286-288	1911	D*	2
	Warehouse	Little Bourke Street	287-295	1920c	D	3
Myer Emporium	Retail Store	Little Bourke Street	290-316	1914c-	C	2
	Warehouse	Little Bourke Street	297-	1915c	D	3
Myer Emporium, part	Retail Store	Little Bourke Street	309	1914c ?	D	3
Post Office, former	Offices, Public	Little Bourke Street	315-321	1890c ?	D	3

MELBOURNE CAD CONSERVATION STUDY- BUILDING SCHEDULE

NAME	TYPE	STREET	NUMBER	DATE	VALUE	STREET SCAPE
Money Order Office, former	Offices, Public	Little Bourke Street	318-320	1887	B	2
	Offices	Little Bourke Street	349-351	1920c	E	
	Warehouses	Little Bourke Street	353-359	1892	D	
Melbourne House	Warehouse	Little Bourke Street	354-360	1920c	D	2
	Factory	Little Bourke Street	361-363	1935c	C	
	Warehouse	Little Bourke Street	362-364	1890	C	
	Warehouse	Little Bourke Street	365-367	1887	C	
	Warehouse	Little Bourke Street	366-370	1930c	D	
	Warehouse	Little Bourke Street	369-371	1920c	D	
	Factory	Little Bourke Street	373-375	1939	C	
Drayton House	Warehouse, Offices	Little Bourke Street	377-381	1920c	D	3
	Warehouse, Hotel (384)	Little Bourke Street	380-384	1860c ?	E	
O'Donohues's Building	Factory	Little Bourke Street	385	1935c	D	3
Hardware House	Offices	Little Bourke Street	386-392	1925c	D	3
Farrants Building	Offices, Retail	Little Bourke Street	387	1920c	D	3
	Warehouse	Little Bourke Street	394-396	1920c ?	D	
	Warehouse	Little Bourke Street	398-400	1900c	D	
Day's Buildings	Offices	Little Bourke Street	401-405	1915c	D	
Printcraft House	Offices	Little Bourke Street	428-432	1920c	E	
Telegraph Exchange	Offices, Public	Little Bourke Street	434-436	1930c	B	2
High Court	Courthouse	Little Bourke Street	438-450	1926-35	C	
Stawell Chambers	Factory	Little Bourke Street	441-443	1900c	D	2
	Warehouse, Offices	Little Bourke Street	493-495	1890	B	
	Warehouse	Little Bourke Street	542-546	1875c	D	
	Factory, Warehouse	Little Bourke Street	590-594	1920c	D	
	Warehouse, Factory	Little Bourke Street	593-595	1920c	D	
	Factory	Little Bourke Street	596-600	1910c	D	
	Factory	Little Bourke Street	597-599	1935c	D	
Union Free Stores, former	Warehouse	Little Bourke Street	601-607	1887c	D	
Eliza Tinsley Machinery Store, former	Warehouse	Little Bourke Street	609-623	1905c	C	3
	Warehouse	Little Bourke Street	625-627	1915c	D	
Youngusband Wool Warehouse	Warehouse	Little Bourke Street	629-631	1895c	C	3
Myer Department Store Crossover	Warehouse	Little Bourke Street	633	1920c	C	3
	Retail Store	Little Bourke Street, over	at 290	1963	B	
	Retail, Residential	Little Collins Street	037	1906	D	
	Factory	Little Collins Street	039-041	1900c	D	
	Factory	Little Collins Street	057-061	1915c	D	
	Factory	Little Collins Street	062-064	1905c	D	
	Retail, Residential	Little Collins Street	066-070	1857-58	A	
	Offices	Little Collins Street	109-119		E	
	Factory	Little Collins Street	121-127	1915c	D	
	Retail, Residential?	Little Collins Street	124-126	1880c	E	
City Newsboys Society, former	Warehouse	Little Collins Street	129-131	1915c	D	2
	Warehouse	Little Collins Street	166-168	1908	E	
Georges Hostess Store	Factory	Little Collins Street	181-191	1940c	C	3
	Factory, Retail	Little Collins Street	188-194	1902	D	
Georges & Georges Store	Warehouse	Little Collins Street	193-197	1888	D	3

MELBOURNE CAD CONSERVATION STUDY- BUILDING SCHEDULE

NAME	TYPE	STREET	NUMBER	DATE	VALUE	STREET SCAPE
Victoria Hotel, former Victoria Coffee Palace	Hotel	Little Collins Street	199-207	1911-	D	3
	Warehouse	Little Collins Street	223-231	1890c	D	1
Bank of New South Wales, former	Bank, Offices	Little Collins Street	267	1935c	D	
	Retail, Residential	Little Collins Street	269	1885c	D	3
	Retail, Residential	Little Collins Street	271	1880c	D	3
	Offices, Retail	Little Collins Street	273-279	1935c	C	
Presgrave Building	Retail Store	Little Collins Street	276-282	1939	A	2
G J Coles Building, rear	Warehouse	Little Collins Street	281-283	1857	C	2
	Warehouse	Little Collins Street	285	1884	D	2
	Warehouse	Little Collins Street	287-289	1884	D	2
	Offices	Little Collins Street	288-290	1915c-	D*	2
	Offices, Retail	Little Collins Street	292-298	1920c	D	2
	Offices, Retail	Little Collins Street	300-302	1920c	D	2
The Methodist Book Buildings	Hotel	Little Collins Street	301-305	1882	D	2
York House	Warehouse, Offices	Little Collins Street	306	1925c	C	2
Allans Building	Warehouse	Little Collins Street	307	1925c	D	2
Royal Arcade Hotel	Retail Arcade	Little Collins Street	308-316	1904	C	2
Christies Piano Warehouse, former	Offices	Little Collins Street	309-311	1932	A	2
Royal Arcade Hotel	Offices & Retail Store	Little Collins Street	313-315	1921	C	2
Royal Arcade	Hotel	Little Collins Street	317-321	1891	C	2
Yule House	Offices, Retail	Little Collins Street	349	1925c	D	
Display Block	Offices	Little Collins Street	358-360	1930c	D	2
Hotel Barclay	Offices	Little Collins Street	362-364	1920c	C	2
McEwan House	Retail/Offices	Little Collins Street	377-379	1925	D	
Benjamin House	Retail, Residential	Little Collins Street	378-380	1880c ?	E	
	Offices	Little Collins Street	382	1915c	E	
Collins Gate	Offices	Little Collins Street	384-390	1940c	D	
Law Institute Building	Warehouse, Offices	Little Collins Street	392-396	1890c	C	
H B A House	Offices	Little Collins Street	397-399	1930c	D	2
	Offices ?	Little Collins Street	423	1860c ?	D *	3
Osbourne House	Retail, Residential	Little Collins Street	425-433	1905c ?	D*	3
	Offices	Little Collins Street	430-436	1884	B	
Normanby Chambers	Hotel	Little Collins Street	435-443	1891	A	2
Stalbridge Chambers	Offices	Little Collins Street	438-444	1925c	D	
Chancery House	Offices	Little Collins Street	445-453	1924	C	
Temple Court (rear)	Offices	Little Collins Street	499-503	1925c	D	
Henty House	Offices	Little Collins Street	511-515	1940c	D	
VPC House	Warehouse	Little Collins Street	527-531	1920c	D	
AB Building	Warehouse	Little Collins Street	538-542	1879	C	2
	Warehouse	Little Collins Street	577-579	1885c	D*	3
	Warehouse	Little Collins Street	581-583	1925c	D*	3
	Warehouse	Little Collins Street	582-584	1874	D	
	Warehouse	Little Collins Street	585-587	1865	B	3
St. Vincent de Paul	Offices, Public	Little Collins Street	601-611	1957	D	
MNDW Offices	Offices	Little Collins Street	616-622	1939	C	
MNTB Headquarters	Factory	Little La Trobe Street	034-036	1920c	D	3
	Factory	Little La Trobe Street	038-040	1930c	D	3
	Warehouse	Little La Trobe Street	041-047	1920c	D	3

MELBOURNE CAD CONSERVATION STUDY- BUILDING SCHEDULE

NAME	TYPE	STREET	NUMBER	DATE	VALUE	STREET SCAPE
	Factory	Little La Trobe Street	042-044	1920c	D	3
	Retail, Residential	Little La Trobe Street	046-048	1864	C	2
	Factory	Little La Trobe Street	049	1920c ?	D *	3
Devon&Cornwall Hotel, former	Hotel	Little La Trobe Street	050-052	1855c	D	2
	Warehouse	Little La Trobe Street	051-053	1890c	D *	3
	Factory, Offices ?	Little La Trobe Street	054	1890c ?	C	2
	Warehouse	Little La Trobe Street	055-057	1930c	D	3
	Retail	Little La Trobe Street	058-060	1860	D	2
	Warehouse	Little La Trobe Street	059-063	1905c	D*	
	Factory	Little La Trobe Street	062-064	1915c	D	2
	Factory?	Little Lonsdale Street	011	1920c	D	
	Factory	Little Lonsdale Street	013-021	1930c	D	
	Factory	Little Lonsdale Street	025	1868c	C	
	Factory	Little Lonsdale Street	027-029		D	
Oddfellows Hotel, former	Hotel	Little Lonsdale Street	033-039	1854	B	< AS D
	Factory	Little Lonsdale Street	047	1930c	D	
	Retail, Residential?	Little Lonsdale Street	049	1905c	E	
	Factory ?	Little Lonsdale Street	100	1930c	D	
	Retail, Residential	Little Lonsdale Street	102-104	1895	D	
	Factory	Little Lonsdale Street	106	1935c	D	
	Warehouse	Little Lonsdale Street	111	1913	D	3
	Factory	Little Lonsdale Street	115	1915c	D *	3
Exploration Hotel, former	Hotel	Little Lonsdale Street	116-118	1862	C	2
	Factory	Little Lonsdale Street	117	1935c	E	
	Row Houses	Little Lonsdale Street	120-122	1855	B	2
	Factory	Little Lonsdale Street	124-126	1914	D	2
Leitrim Hotel, former	Hotel	Little Lonsdale Street	128-130	1888	B	2
	Warehouse	Little Lonsdale Street	132	1906	D	2
	Warehouse	Little Lonsdale Street	144	1910c	D *	3
	Retail, Residential	Little Lonsdale Street	148	1885c	D *	3
	Factory	Little Lonsdale Street	194-196	1905c	C	1
	Warehouse	Little Lonsdale Street	198-200	1905	B	1
	Warehouse	Little Lonsdale Street	202	1905c	B	1
	Warehouse	Little Lonsdale Street	208-212	1890c	D *	2
	Warehouse	Little Lonsdale Street	214-216	1890c	C	2
	Warehouse	Little Lonsdale Street	218-224	1908	D	2
	Factory	Little Lonsdale Street	274-278	1940c	D	
	Warehouse	Little Lonsdale Street	279	1890c	D	2
	Warehouse	Little Lonsdale Street	281		D	2
Redans Building	Warehouse	Little Lonsdale Street	283	1935c	D	2
	Warehouse	Little Lonsdale Street	285-287	1890c	C	2
	Warehouse	Little Lonsdale Street	289	1891	C	2
	Warehouses	Little Lonsdale Street	293-295	1890c	D	2
	Factory	Little Lonsdale Street	294	1910c	D	3
	Retail, Residential	Little Lonsdale Street	297	1880c	D*	2
	Warehouse	Little Lonsdale Street	299	1890c ?	D*	2
	Factory	Little Lonsdale Street	301-307	1920c	D*	2
	Factory	Little Lonsdale Street	304	1920c	D	3

MELBOURNE CAD CONSERVATION STUDY- BUILDING SCHEDULE

NAME	TYPE	STREET	NUMBER	DATE	VALUE	STREET SCAPE
Keep & Co. Warehouse, former Pheonix Press	Warehouse	Little Lonsdale Street	312-320	1900c	D	
	Printery ?	Little Lonsdale Street	359	1920c	D	
Health Department Tuberculoasis Bureau, former Venereal Diseases Clinic, former	Factory	Little Lonsdale Street	361-365	1920c	E	
	Offices, Public	Little Lonsdale Street	364-370	1935c	C	2
	Offices, Public	Little Lonsdale Street	372-378	1935c	C	2
	Factory	Little Lonsdale Street	395-397	1920c	E	
	Residential, Welfare	Little Lonsdale Street	458-464	1915c	D	
William Booth Mens Hostel	House	Little Lonsdale Street	466-468	1855	E	
	Retail, Residential	Little Lonsdale Street	470	1873	C	
	Retail, Residential	Little Lonsdale Street	472	1873	D	2
	House	Little Lonsdale Street	474	1870c	D #	2
	Warehouse	Little Lonsdale Street	476-490	1925c	D	
	Warehouse	Little Lonsdale Street	523-525	1899	B	
	Warehouse, Offices	Little Lonsdale Street	523-525	1855	B	
	Factory	Little Lonsdale Street	538-540	1920c	D	3
	Factory	Little Lonsdale Street	542-546	1920c	D	3
	Factory	Little Lonsdale Street	563-567	1920c	D	
	Factory	Little Lonsdale Street	597	1915c	D	
	Factory	Little Lonsdale Street	601	1920c	D	
	Factory	Liverpool Street	021		D #	3
	Warehouse	Liverpool Street	023		D #	3
	Municipal Urinal	Urinal	Lonsdale Street	-	1915c ?	C
Factory		Lonsdale Street	002-004	1914	D	
Warehouse		Lonsdale Street	010-016	1935c	C	2
Taubnan's Pty Ltd, former	Warehouse, Factory	Lonsdale Street	018-030	1930c	C	2
	Factory	Lonsdale Street	032-036	1914	D	2
	Factory	Lonsdale Street	035-041	1930c	D	
	Row Houses	Lonsdale Street	038-040	1851 ?	E	
Black Eagle Hotel, former	Hotel	Lonsdale Street	042-044	1850-	C	
	Retail, Residential	Lonsdale Street	053-057	1885c	D	
Khyat & Co.	Factory	Lonsdale Street	064-070	1922	C	2
	Warehouse	Lonsdale Street	072-074	1888	D	2
	Warehouse	Lonsdale Street	076-078	1888	C	2
	Factory	Lonsdale Street	103-105	1910c	C	3
	Warehouse	Lonsdale Street	107-111	1885c	D #	3
	Factory	Lonsdale Street	113	1890c	D	3
	Warehouse	Lonsdale Street	115	1905c	D	3
	Offices, Warehouse	Lonsdale Street	117-121	1910c	D	3
	Residential, Welfare	Lonsdale Street	118-122	1926-	B	
	Princess Mary Club former Methodist Mission Hostel					
Nicholas Hall	Hall	Lonsdale Street	124-148	1938	C	
Wesley Church	Church	Lonsdale Street	124-148	1858-	A	
Wesley Church Sexton's Lodge	House, Religious	Lonsdale Street	124-148	1917c?	C	
Wesleyan Church Parsonage	House, Religious	Lonsdale Street	124-148	1859c	B	
Wesleyan Church Sunday School	School	Lonsdale Street	124-148	1859	B	
	Retail, Residential	Lonsdale Street	169	1885c ?	D #	3
Queen Victorian Memorial Hospital, former Melb. Hospital	Hospital	Lonsdale Street	172-254	1911-16	A, B	

MELBOURNE CAD CONSERVATION STUDY- BUILDING SCHEDULE

NAME	TYPE	STREET	NUMBER	DATE	VALUE	STREET SCAPE
	Warehouse	Lonsdale Street	185-187	1891	C	2
	Warehouse	Lonsdale Street	189-191	1887	C	2
	Warehouse ?	Lonsdale Street	213-215	1880c--	E	
Golden Square Car Park	Car Park	Lonsdale Street	225-231	1953	C	
	Retail,Residential	Lonsdale Street	233-237	1890c	D*	3
	Retail,Residential	Lonsdale Street	239	1890c ?	D*	3
	Retail,Residential	Lonsdale Street	241-245	1880c ?	D*	3
	Warehouse	Lonsdale Street	270	1910c	D	
Lonsdale House	Offices	Lonsdale Street	271-273	1934-5	C	2
	Offices,Warehouse ?	Lonsdale Street	275-277	1890c	C	2
	Offices,Warehouse ?	Lonsdale Street	279-281	1890c	C	2
Myer Emporium	Retail Store	Lonsdale Street	283-321	1925	B	
Ricksha House	Warehouse	Lonsdale Street	304-310	1935	D	
St Francis Catholic Church	Church	Lonsdale Street	344	1841-5..	A	
Mitchell House	Offices	Lonsdale Street	352-362	1936	B	2
	Offices	Lonsdale Street	355-357	1960c	D	
	Retail,Residential	Lonsdale Street	359-363	1873 ?	E	
Askew House	Offices	Lonsdale Street	364-372	1937	C	2
	Warehouse	Lonsdale Street	377-379	1889	C	
Overseas Telecommunications House	Offices	Lonsdale Street	382-384	1959	D	
Hotel Francis	Hotel	Lonsdale Street	383-387	1935c	D	
Electolytic Zinc	Offices	Lonsdale Street	386-392	1959	B	
	Warehouse,Offices	Lonsdale Street	394-396	1916	D	
	Offices	Lonsdale Street	402-408	1960c	C	
AEWL House	Warehouse,Offices	Lonsdale Street	410-412	1922	E	
Laurens House,former	Offices	Lonsdale Street	414-416		D	
	Offices, Bank	Lonsdale Street	433	1965c	D	
Taxation Office Building	Offices,Public	Lonsdale Street	436-450	1930c	B	
	Offices	Lonsdale Street	439-445	1925c	C	
Crown Law Offices	Offices	Lonsdale Street	459-	1893	A	1
	Row Houses	Lonsdale Street	472-474	1886c	C	
Australian Broadcasting Commission Studios and Offices	Studios,Radio	Lonsdale Street	480	1941-3?	C	
Crown Law Department	Offices	Lonsdale Street	509-523	1965c	C	
Melbourne Storage Co.,former	Warehouse	Lonsdale Street	541-561	1890	B	2
	Factory,Printery ?	Lonsdale Street	552-554	1935c	E	
	Retail,Residential	Lonsdale Street	556	1855c	A	
	Offices	Lonsdale Street	572	1920c	E	
	Warehouses	Lonsdale Street	573-577	1858	A	2
	Warehouse	Lonsdale Street	576-578	1889--	E	
Reidy's Building	Warehouse	Lonsdale Street	612	1911c	B	
	Factory ?	Lonsdale Street	619	1940c	D	
MCC Electric Power Station	Electric Power Stn	Lonsdale Street	619-629	1952	C	
MCC Electric Power Station	Substation,D C	Lonsdale Street	629-669	1915c	C	
Pancake Parlour,former National Hotel(part)	Hotel ?	Market Lane	025	1860c ?	D	
Lotus Inn	Warehouse	Market Lane	026	1920c	E	
Southern Cross Assurance Co.	Offices	Market Street	008	1962	B	
Port Authority Building,former	Offices	Market Street	029-031	1930	A	

MELBOURNE CAD CONSERVATION STUDY- BUILDING SCHEDULE

NAME	TYPE	STREET	NUMBER	DATE	VALUE	STREET SCAPE
Coop Shot Tower, former	Shot Tower	McIntyre Alley	-	1890	A	2
	Warehouse	McKillop Street	012	1868- ?	D *	3
	Warehouse	McKillop Street	014	1935c	D	3
	Warehouse	McKillop Street	015-019	1854-60	A	
	Warehouses	McKillop Street	016-022	1889	B	3
Kelvin Club	Warehouse	Melbourne Place	-	1874	C	
	Retail, Residential	Meyers Place	020	1915c	E	
	Warehouse	Hill Place	-	1880c	D	
	Warehouse	Niagara Lane	015	1925c	D	
	Warehouses	Niagara Lane	025-031	1887	A	
MCC Substation	Substation	Park Street	-	1930c	D	
	Warehouse	Patrick Street	017	1925c	D	3
	Warehouses	Patrick Street	019-023	1885c	C	3
	Warehouse	Patrick Street	022-026	1905c	C	2
	Factory ?	Punch Lane	022	1900c ?	E	
Municipal Toilets	Toilets	Queen Street	-	1925c ?	C	
Felton Building	Offices	Queen Street	007-011	1886	B	1
Lombard Building	Offices	Queen Street	013-015	1890	A	1
Alkira House	Offices	Queen Street	018	1937	A	
South Australian Insurance, former Yorkshire Insurance	Offices	Queen Street	020-026	1922c	C	
Provident Life Building	Offices	Queen Street	037-041	1937	B	
Union Insurance Society of Canton	Offices	Queen Street	043-051	1957	D	2
Normich Union Insurance Societies	Offices	Queen Street	053-057	1957	C	2
Melbourne Stock Exchange, former	Offices	Queen Street	088-092	1891	A	1
National Trustees Executors and Agency Co.	Offices	Queen Street	093-095	1939	B	
RACV Building, former	Offices	Queen Street	094-098	1925	C	1
	Offices	Queen Street	100-104	1925c	C	1
	Offices	Queen Street	103-105	1935c	D	
	Offices	Queen Street	106-110	1929	B	1
Mercentile Mutual Chambers	Offices	Queen Street	111-129	1961	D	
R.A.C.V. Building	Offices	Queen Street	118-126	1936	A	
ACA Building	Offices	Queen Street	128-146	1966	B	
Scottish Amicable Building	Offices	Queen Street	128-146	1966	B	
Scottish Amicable Life Assurance Society	Offices	Queen Street	131-141	1930c	D	
	Offices	Queen Street	155-161	1962	D	
South British Insurance	Offices	Queen Street	158-164	1964	D	
Sleigh Corner, former	Offices	Queen Street	178-182	1960	D	
National Insurance Co. of N.Z.	Offices	Queen Street	203-205	1870	D	3
	Retail, Residential	Queen Street	207-211	1910c	D	3
	Retail, Residential	Queen Street	215	1925c	D	3
	Retail, Offices ?	Queen Street	217-219	1907	C	3
	Warehouse	Queen Street	242-246	1935c	D	
Hotel Cecil, former Council Club Hotel	Hotel	Queen Street	247-283	1875-88	A	1
Titles Office	Offices	Queen Street	262-264	1915c	D	
	Warehouse	Queen Street	287-295	1900	A	1
Health Department Building (former Records Office)	Offices, Public	Queen Street	294-308	1859	A	
Mental Health Authority Building, former	House	Queen Street				

MELBOURNE CAD CONSERVATION STUDY- BUILDING SCHEDULE

NAME	TYPE	STREET	NUMBER	DATE	VALUE	STREET SCAPE
Millbourn House	Offices	Queen Street	316-318	1961	D	
Celtic Club Building, former West Bourke Hotel	Hotel	Queen Street	320-326	1887c	B	
Canada Cycle Motor Co. Building, former	Retail, Motor	Queen Street	346-366	1925c	D	
	Warehouse	Queen Street	365-371	1910c	D	3
Bank of New South Wales (former)	Bank	Queen Street	373-375	1925c	? C	
	Warehouse	Queen Street	432-436	1915c	D	
	Warehouse	Queen Street	452	1925c	D	
Munro's Corner	Warehouse	Queen Street	468	1930c	D	3
	Warehouse	Ramsden Place	-	1885c	D	
Richard Allen & Sons P/L Building	Warehouse	Ramsden Place	-	1919	D	
	Factory ?	Rankins Lane	001-003	1890c	D #	3
	Warehouse	Rankins Lane	002-004	1905c	D	2
	Warehouse	Rankins Lane	005	1920c	D	3
	Warehouse	Rankins Lane	006-008	1910c	D	2
	House ?	Ridgeway Place	018	1880c	D	
	Warehouse	Ridgeway Place	020	1890c	D	
City Watch House	Remand Centre	Russell Street		1880-99	B	1
Police Garage	Garage	Russell Street		1925c	D	1
Melbourne Gaol, former-Cell Block	Gaol, Cells	Russell Street	-	1853	A	1
Melbourne Gaol, Former-Chapel	Church, Gaol	Russell Street	-	1860	A	
Emily McPherson College of Domestic Economy, former	School	Russell Street	-	1926	B	1
Cavendish House	Offices	Russell Street	027-037	1925c	C	2
E S & A Bank, former	Offices, Bank	Russell Street	042-044		D	2
Scots Church Hall	Hall	Russell Street	097-101	1920c	D	
State Offices Annexe	Offices, Public?	Russell Street	103-107	1955c	D	
	Warehouse	Russell Street	109-113	1915c	D	
Russell St Telephone Exchange & Post Office	Post Office	Russell Street	114-120	1954	D	
	Retail, Residential	Russell Street	166	1870c ?	D	3
Temperance Hall, former	Offices, Hall	Russell Street	168	1870c	D	3
Total Carpark	Car Park	Russell Street	170-190	1970c	B	
	Retail, Residential	Russell Street	175-181	1905c	D #	3
	Retail, Offices	Russell Street	189-197	1895c	D #	3
Exford Hotel	Hotel	Russell Street	199-203	1914	C	3
Harris' Building	Offices, Warehouse	Russell Street	205-207	1890c	D #	3
	Retail, Residential	Russell Street	209-211	1905c	D #	3
	Retail, Offices ?	Russell Street	213-219	1890c	D #	3
	Retail, Residential	Russell Street	226-228	1870c	D	3
Continental Hotel	Hotel	Russell Street	230-234	1905c	D	
	Retail, Offices?	Russell Street	231-233	1925c	D #	
	Retail, Residential	Russell Street	235-241	1885c	D	3
	Retail, Residential	Russell Street	250-252	1851-?	E	
	Retail, Warehouse	Russell Street	258-262	1907	D	3
	Retail, Residential	Russell Street	264	1893	D	3
Druid's Hotel, former	Hotel	Russell Street	272	1873	E	
National Museum	Museum	Russell Street	285-321	1925-30	A	
Ship Inn, Former	Hotel	Russell Street	288-294	1855-	C	3
	Retail, Residential	Russell Street	296-298	1874	D	3

MELBOURNE CAD CONSERVATION STUDY- BUILDING SCHEDULE

NAME	TYPE	STREET	NUMBER	DATE	VALUE	STREET SCAPE
Kirkham,W	Factory	Russell Street	300	1925	D	3
	Factory	Russell Street	302-304	1912	D	3
Court of Petty Sessions	Courthouse	Russell Street	325-	1911	A	1
	Retail, Residential	Russell Street	326-328	1851	Pre C	2
City Court Hotel	Hotel	Russell Street	330-334	1851-	? C	2
Police Headquarters Annexe	Offices,Public	Russell Street	336-350	1951c	D	3
Police Headquarters	Offices	Russell Street	354	1943	A	
I.O.O.F. Building	Offices	Russell Street	380	1963	B	
Police Barracks,former	Offices,Public	Russell Street	372-376	1888	C	
	Warehouse	Somerset Place	013	1910c	D	3
	Warehouse	Somerset Place	015	1900c	D	3
	Warehouse	Somerset Place	021	1925c	D	3
Nicholson's Warehouse	Warehouse	Somerset Place	029-031	1900c	D	3
Sir Charles Hotham Hotel	Hotel	Spencer Street	002-008	1913	B	2
Great Southern Hotel	Hotel	Spencer Street	010-022	1891	C	2
Batman's Hill Hotel	Hotel	Spencer Street	066-070	1929c	C	
MHBW Building	Offices,Public	Spencer Street	106-120	1973	B	
Savoy Plaza,former Alexander Hotel	Hotel	Spencer Street	122-132	1929	D	
General Post Office, Parcels Building, Mail Exchange	Offices, Public	Spencer Street	164-200	1917	B	2
M.C.C. Power Station	Offices	Spencer Street	204-240	1894	C	
	Warehouse	Spencer Street	300-302	1915c	E	
	School	Spring Street	-	1935	A	
Royal Australian College of Surgeons	House	Spring Street	053-065	1877	B	1
Windsor,former Grand Hotel	Hotel	Spring Street	103	1883-8	A	3
Windsor Hotel Annexe	Hotel	Spring Street	137	1961	D	3
Princess Theatre	Theatre	Spring Street	163-181	1887-	A	
Melbourne Dental Hospital&College,former	Hospital,School	Spring Street	185-197	1915c	E	
Church of England Mission	Hall	Spring Street	261	1913	B	
Elms Family Hotel	Hotel	Spring Street	267	1925	C	
Blessed Sacrament Fathers' Monastery	Monastery	St Francis Street	-	1953c	C	
Mason's Building	Warehouse	Sugden Place	-	1925c	E	
	Warehouse	Sutherland Street	002	1880c ?	E	
	Warehouse	Sutherland Street	029	1890c	D	
Basalt Rubble Wall	Wall	Sutherland Street	Wall	1850c ?	E	
MNTB Toilets&Observation Tower	Toilets	Swanston Street	-	1925c	D	
Young & Jacksons Hotel	Warehouse	Swanston Street	001-003	1854	A	2
Young & Jackson's Hotel,part	Warehouse	Swanston Street	005-007	1854--	D	2
	Retail,Residential	Swanston Street	013	1910c	E	
Commercial Bank,former	Bank? Offices	Swanston Street	021-025	1940c	D	
St Paul's Cathedral	Church	Swanston Street	022-040	1880-91	A	
Nicholas Building	Offices	Swanston Street	027-041	1926	B	
	Retail,Offices ?	Swanston Street	065	1904	D	
Graham Hotel,Former (defaced)	Hotel	Swanston Street	067-073	1953-4	E	
Melbourne Town Hall	Town Hall	Swanston Street	090	1867-70-	A	1
Manchester Unity Building	Retail Store&Offices	Swanston Street	091-107	1932	A	1
Capitol Cinema(Ceiling)	Ceiling	Swanston Street	109-117	1924	A	

MELBOURNE CAD CONSERVATION STUDY- BUILDING SCHEDULE

NAME	TYPE	STREET	NUMBER	DATE	VALUE	STREET SCAPE
Capitol House	Offices	Swanston Street	113	1924	B	
Buxton's Gallery, former	Offices, Retail	Swanston Street	119-121	1888	B	2
	Offices	Swanston Street	123	1925c	D	2
Century Building	Office, Retail, Cinema	Swanston Street	125-133	1938-40	B	2
Melbourne Council Chambers	Offices, Municipal	Swanston Street	130	1901	A	1
	Offices, Retail	Swanston Street	135-137	1920c	C	3
Fauls Building	Offices, Retail	Swanston Street	139-141	1915c	D	3
	Retail, Residential	Swanston Street	144-150	1880c	E	
	Offices, Retail	Swanston Street	149-153	1910c	D	3
	Offices, Retail	Swanston Street	154-156	1920c	D	
	Offices, Retail	Swanston Street	155-159	1925c	D	3
	Offices, Retail	Swanston Street	161	1915c	D	3
Swanston House	Offices, Retail	Swanston Street	163-165	1920c	C	3
	Retail, Residential	Swanston Street	166-168	1885c	D	
	Retail, Residential	Swanston Street	170-172	1885c	E	
Foy & Gibson's, former	Retail Store	Swanston Street	184-206	1935c	D	
	Offices, Retail	Swanston Street	207-209	1940c	D	3
	Retail, Residential	Swanston Street	208-214	1910c	D	
	Offices, Retail	Swanston Street	211-213	1925c	D	3
	Retail, Residential	Swanston Street	215	1856	D	3
E.S. & A. Bank, Former	Bank	Swanston Street	219-225	1928	A	3
Ballarat Star Hotel, Former	Hotel	Swanston Street	226-228	1888	C	1
Latham House, former Globe Hotel	Hotel	Swanston Street	230-238	1858-	B	1
Savings Bank Centre	Offices, Bank	Swanston Street	231-235	1961	D	
	Offices, Retail	Swanston Street	237	1915c	D	
	Retail, Residential	Swanston Street	240-246	1859c-	C	1
	Offices, Retail ?	Swanston Street	243-249	1885c	D	3
Curtin House	Offices, Retail, Club	Swanston Street	248-252	1922	B	1
	Retail, Residential	Swanston Street	251-253	1915c ?	D	3
	Retail, Residential ?	Swanston Street	255	1915c	D	3
	Retail, Residential	Swanston Street	257-259	1910c	D	3
Denyers Surgical Suppliers	Retail, Surgical	Swanston Street	264-266	1914	C	2
National Bank of Australasia, former	Bank	Swanston Street	277-279	1935c	D	
Brittania Hotel	Hotel	Swanston Street	281-287	1920	D	
	Offices, Retail	Swanston Street	301-303	1920c	D	3
State Library	Library	Swanston Street	304-328	1856--	A	
State Library, Reading Room	Library	Swanston Street	304-328	1908-	A	
Brooke Buildings	Offices, Retail	Swanston Street	305-307	1915c	D	3
	Retail, Residential	Swanston Street	309-325	1870c	C	2
Church of Christ, former John Knox Church	Church	Swanston Street	327	1863	A	2
RMIT Building 22	Factory	Swanston Street	330-334	1913	C	2
M.U.I.O.D.F. Building	Offices	Swanston Street	335-347	1941	C	
RMIT Building 20	Retail, Residence	Swanston Street	336-338	1883	D	2
RMIT Building 18	Factory, Retail	Swanston Street	340	1886	D	2
Storey Hall, former Hibernian Hall	Hall	Swanston Street	344-346	1887	A	2
	Retail, Club, Resid	Swanston Street	401-403	1890	C	3
Druids House	Offices	Swanston Street	407-409	1926	C	3
	Warehouse	Swanston Street	411-423	1915c	D	3

MELBOURNE CAD CONSERVATION STUDY- BUILDING SCHEDULE

NAME	TYPE	STREET	NUMBER	DATE	VALUE	STREET SCAPE
City Baths	Baths, Public	Swanston Street	420	1903	A	
Oxford Hotel	Hotel	Swanston Street	427-433	1887	C	
	Warehouse	Swanston Street	459-469	1905c	D	
Ansett Transport Industries	Offices	Swanston Street	489-499	1961	D	
	Warehouse	Tattersalls Lane	-	1915c	D	
	Warehouse, Substation	Tavistock Place	-	1927	E	
	Warehouses	Therry Street	097-141	1930c	D	2
EZ Industries	Warehouse	Timothy Lane	-	1889c	C	
	Row Houses	Victoria Street	021	1864	B	
Horticultural Hall	Hall and Office	Victoria Street	031-033	1874	A	2
Oddfellows Hall	Hall	Victoria Street	035	1877-88	B	2
Royal Melbourne Regiment, 6th Battalion	Hall, Drill	Victoria Street	049-053	1937	A	
	Warehouse	Waratah Place	-	1890c	C	
	Warehouse	Waratah Place	011-017	1905c	D *	3
	Warehouse	Waratah Place	019-021	1930c	C	3
	Factory ?	Warburton Lane	-	1880c	D	
	Warehouse	Warburton Lane	010	1880c	D	3
	Warehouse	Warburton Lane	012	1905c	D *	3
	Warehouse	Watson Place	-	1870c ?	E	
Watson Building	Factory	Watson Place	014	1907	D	
Customs House	Offices, Public	William Street	001-013	1965	D	
State Electricity Commission Buildings	Offices, Public	William Street	015-033	1965-8	D	
Lyle House	Offices	William Street	022-032	1921	D	
	Offices	William Street	049-053	1925c	D	3
Beaufort House	Offices	William Street	055-057	1932	D	3
Western House, National Bank of Australasia	Bank, Offices	William Street	077-089	1939	A	
Queensland Building	Offices	William Street	084-088	1913	A	1
Scottish House	Offices	William Street	090-098	1908	B	1
Australian Club (Stage 3)	Club	William Street	100-110	1889-94	A	1
Australian Club (Stages 1 and 2)	Club	William Street	100-110	1879	A	1
Estates House, Former	Offices	William Street	114-128	1976	C	1
Broken Hill Propriety Ltd. House	Offices	William Street	130-148	1973	B	1
Shell Building	Offices	William Street	147-157	1960	B	1
Shell Corner	Offices	William Street	163-9	1933	A	
	Offices	William Street	170-176	1965c	D	
	Offices	William Street	177-185	1960c	D	
Prudential Building	Offices	William Street	178-188	1960c	D	
Law Courts	Courts, Offices	William Street	192-288	1875-84	A	1
Owen Dixon Chambers	Offices	William Street	205-221	1960-2	D	
	Offices	William Street	233-239	1925c	D	3
	Factory	William Street	241-245	1920c	D	3
	Offices, Warehouse	William Street	259	1889	B	2
Jessie McPherson Community Hospital, Former	Hospital	William Street	260-278	1933	D	
	Retail, Residential	William Street	261	1856	C	2
Metropolitan Hotel	Hotel	William Street	263-267	1905c	D	2
General Credits	Offices	William Street	277-287	1961	E	
Royal Mint	Mint, Offices	William Street	280-318	1872	A	
	Factory	William Street	386-412	1940c	D	

PAGE NO. 00025
12/06/85

MELBOURNE CAD CONSERVATION STUDY- BUILDING SCHEDULE

NAME	TYPE	STREET	NUMBER	DATE	VALUE	STREET SCAPE
Telephone Exchange, former	Factory Exchange, Telephone	Mills Street Mills Street	017-023 025-029	1935c 1884	D B	

27 Windsor Place - D
Cback of The Windsor

Melbourne CAD Conservation Study-Schedule of Elements

NAME	STREET	NUMBER	TYPE	MATERIALS
	Altson Lane	-	Bollard	Basalt
	Bourke Street	035 nr.	Post Box	Cast Iron
	Club Lane	-	Sign,Street	Enamellised Metal
	Exhibition Street	110 nr.	Street Light Base	Cast Iron
	Exhibition Street	326 nr.	Horse Trough	
	Flinders Lane	510 nr.	Bollard	Basalt
	Flinders Lane	586 nr.	Bollard	Basalt
	Gregory's Lane	-	Sign,Street	Enamellised Metal
	Hosier Lane	-	Sign,Street	Enamellised Metal
	King Street	330 nr.	Street Light Base	Cast Iron
	Little Bourke Street	400 nr.	Service Cover	Cast Iron
	Little Bourke Street	570 nr.	Service Cover	Cast Iron
	Little Lonsdale Street	011 nr.	Inlet Cover	Slate
	Lonsdale Street	330 nr.	Gate Post	Basalt
	Lonsdale Street	394 nr.	Street Light Base	Cast Iron
	Lonsdale Street	456 nr.	Fence	Iron, Stone
	Monaghan Place	-	Sign,Street	Enamellised Metal
	Queen Street	111 nr.	Street Light Base	Cast Iron
	Queen Street	287 nr.	Horse Trough	
	Ramsden Place	-	Sign,Street	Enamellised Metal
	Ridgeway Place	022 nr.	Sign, Advertising	Painted
	Russell Street	115 nr.	Street Light Base	Cast Iron
	Russell Street	245 nr.	Horse Trough	
	Russell Street	376 nr.	Street Light Base	Cast Iron
	Somerset Place, east side	-	Electricity Lines	
	Staughton Alley	-	Sign,Street	Enamellised Metal
The Driver	Swanston Street	304	Statue	Bronze,Stone
Jeanne d'Arc	Swanston Street	304	Statue	Bronze,Stone
St George & Dragon	Swanston Street	304	Statue	Bronze,Stone
Wipers	Swanston Street	304	Statue	Bronze,Stone,Cement
	Swanston Street	304	Light Bases(2)	Bronze,Granite base
Sir Redmond Barry	Swanston Street	304	Statue	Bronze,Granite
	Swanston Street	304	Light Bases(2)	Cast iron
	Westwood Place	-	Street,Sign	
	William Street	035 nr.	Street Light Base	Cast iron

APPENDIX TWO

National Trust of Australia (Victoria)
Schedule of Significant Trees CBD Area

Note that this does not include the full extent of the present study area, and specifically excludes Flagstaff Hill, the Fitzroy Gardens and the Treasury Gardens.

**NATIONAL TRUST OF AUSTRALIA (VICTORIAN)
SCHEDULE OF SIGNIFICANT TREES C.B.D. AREA**

NAME	LOCATION	CITATION
1. <u>Quercus cerris</u> L. (Turkey Oak)	Rumton Reserve between Macarthur Street and Parliament Place	Located on the corner of Parliament Place. It is a well-shaped tree with an attractive spreading canopy. Canopy spread: 20 m; Height: 18.5 m; Girth: 2.8m makes it one of the larger examples of the species known.
2. <u>Phoenix canariensis</u> Hort. ex Chabaud (Canary Island Date Palm)	Gordon Reserve Cnr Macarthur & Spring Streets.	A stand of 5 palms contributing significantly to the landscape. This is the only group of trees on the triangular reserve and are in good condition although <u>Coprosma repens</u> should be removed from the crown of 2 palms. Canopy spread: 6m; Height: 24 m; Girth: 2.2m they are notable plantings in an historical precinct.
3. <u>Magnolia grandiflora</u> <u>Acacia iteaphylla</u> <u>Eucalyptus</u> sp. <u>Callistemon</u> sp. <u>Araucaria heterophylla</u> X2 <u>Syzygium paniculatum</u> X2 <u>Araucaria cunninghamii</u> <u>Eucalyptus ficifolio</u> X13 <u>Prunus cerasifera</u> 'Nigra' <u>Liquidum lucidum</u> 'Tricolor' <u>Camellia japonica</u> cv. X2 <u>Cupressus macrocarpa</u> 'Horizontalis Aurea' <u>Cupressus macrocarpa</u> X2 <u>Grevillea robusta</u> <u>Stenocarpus sinuatus</u> X3 <u>Schinus molle</u> var. <u>areira</u> <u>Quercus robur</u> X2 <u>Aesculus hippocastanum</u> <u>Phoenix canariensis</u> <u>Jacarandra mimosifolia</u> <u>Cinnamomum camphora</u> <u>Lagunaria patersonia</u> <u>Liriodendron tulipifera</u> <u>Prunus persica</u> cv. <u>Quercus canariensis</u> X3 <u>Cotoneaster glaucophyllus</u> f. <u>serotina</u> <u>Photinia serrulata</u> <u>Ginkgo biloba</u> <u>Lophostenon confertus</u>	A stand of mixed species of various ages and condition forming an important backdrop to Parliament House, particularly the Cypress, Cedars and Araucarias which have attained a considerable size. The Magnolia was transplanted to make way for the underground and is in a fair condition. The Acacia and Eucalyptus sp. are recent inappropriate plantings as part of the underground development and are not sympathetic to the existing mature plantings. The Eucalyptus ficifolia avenue along the drive is very impressive, as is the Araucaria cunninghamii specimen. The Liquidum, Camellias and Cinnamomum specimens are all very large and well shaped, representing some of the finest specimens known.	

NAME	LOCATION	CITATION
4. <i>Washingtonia robusta</i> <i>Washingtonia filifera</i> <i>Jacarandra mimosifolia</i> <i>Prunus cerasifera</i> 'Atropurpurea' <i>Viburnum x burkwoodii</i> <i>Phoenix canariensis</i> X10 <i>Cedrus deodara</i> X2 <i>Syzygium floribundum</i> X4 <i>Cotoneaster glaucophyllus</i> f. <i>serotina</i> <i>Photinia serrulata</i> X2 <i>Cinnamomum camphora</i> <i>Phoenix carariensis</i> <i>Podocarpus falcatus</i> <i>Quercus robur</i> X2 <i>Magnolia grandiflora</i> <i>Prunus</i> 'Pollardii' <i>Syzygium paniculatum</i> <i>Acacia sellowiana</i> <i>Trachycarpus fortunei</i> <i>Washingtonia robusta</i> <i>Jacarandra mimosirolia</i> <i>Phoenix reclinata</i>	Parliament Gardens Cnr Albert & Nicholson Streets Corner section of Gardens Area beside Parliament Gardens and Parliament House building	An attractive triangular-shaped garden containing a number of mixed shrubs, annuals and trees. Fine specimens of palms making a particularly attractive group planting in a prominent location. Another small garden containing a variety of mixed species. The <i>Podocarpus falcatus</i> is a rare species and is a large, fine example.
5. <i>Schinus molle</i> var. <i>arcira</i> L. (Pepper Tree)	Carpark, Albert Street entrance north of Parliament House	A large well-shaped tree with a spreading canopy and weeping habit. Canopy spread: 23 m; Height: 21 m; Girth: 3.4 m the tree is in good condition. Following lopping 25-30 years ago the tree has been correctly managed in recent years.
6. <i>Ficus macrophylla</i> Desf. ex. Pers. (Moreton Bay Fig)	College of Surgeons Garden Cnr Lonsdale & Nicholson Streets	A large spreading, multi-stemmed tree containing a lot of adventitious growth requiring tree surgery. Canopy spread: 23 m; Height: 21 m. The Garden also contains a number of other interesting plantings. An outstanding specimen displaying its characteristic growth form. The tree is well-shaped and in good condition although some deadwood is present. Canopy spread: 12.5 m; Height: 12.7 m; Girth: 2.62. Three smaller stressed trees are growing nearby. A number of other notable trees are growing behind the Weather Station and along Rathdowne Street. Two impressive palms framing an important historic building. Both trees have similar dimensions and are in excellent condition. Canopy spread: 6 m; Height: 23 m; Girth 2.3m. A fine old specimen growing in the courtyard of a popular and historic building.
7. <i>Brachyhiton populneus</i> (Schott & Endl.) R. Br. (Kurrajong)	Cnr Latrobe & Rathdowne Streets outside entrance to 8 Latrobe Street	
8. <i>Phoenix canariensis</i> Hort. ex Chabaud (Canary Island Date Palm)	Pair, Russell Street, opposite Mackenzie Street, Old Melbourne Gaol	
9. <i>Phoenix canariensis</i> Hort. ex Chabaud (Canary Island Date Palm)	Five trees, Cnr Swanston & Flinders Streets.	

	NAME	LOCATION	CITATION
10.	<u>Asmena smithii</u> (Poir.) Merrill & L.M. Perry (Lily Pilly)	Stand, Forecourt to the Museum of Victoria, Swanston Street.	Twelve trees planted in a formal layout of 8 trees (4 either side) lining the main central path and 2 trees either end. Canopy spread: 18 m; Height: 15 m the trees are a major feature of a well-used park. To either side of the planting, along Latrobe and Lt Lonsdale Sts are stands of <u>Melaleuca styphelioides</u> (x20). No other plantings exist here. An unknown species of Ficus with dark green foliage and a large size, it is a dominant feature in the courtyard. Canopy spread: 13.5 m; Height: 20.75 m, Girth: 2.3 m.
11.	<u>Ficus</u> sp.	Courtyard, Queen Victoria Hospital off Lt Lonsdale Street	A large tree in a prominent location near a busy intersection. The tree has undergone extensive tree surgery in recent years: deadwooding, cabling, tree reduction and shaping. Canopy spread: 12.8 m; Height: 13.4 m; Girth: 2.6 m.
12.	<u>Ulmus x hollandica</u> Mill. (Dutch Elm)	Queen Victoria Hospital, Cnr Lonsdale & Swanston Streets.	Two fine specimens whose narrow habit relate well to the multi-storey building in the background: particularly the towers. The trees are not equi-distant either side of the entrance.
13.	<u>Populus nigra</u> 'Italica' L. (Lombardy Poplar)	Pair, entrance to Queens Elizabeth Wing of Queen Victoria Hospital, Lonsdale Street.	A fine specimen with a canopy spread of 24 m makes it a dominant feature of the small courtyard. It is well-shaped and in excellent condition.
14.	<u>Acer negundo</u> L. (Box Elder)	Queen Victoria Hospital, Courtyard of Lonsdale Street.	A fine example of the species displaying its characteristic habit: large straight trunk and few side branches, possibly making it the tallest tree in the C.B.D. Canopy spread: 7.8 m; Height: 26.8; Girth: 2.41 m.
15.	<u>Agathis robusta</u> (C. More ex F. Muell.) F.M. Bailey (Queensland Kauri)	Queen Victoria Hospital along Lonsdale Street	These trees are possibly among the oldest in the C.B.D. The Customs House being completed in 1876. The two trees fronting William Street have been very badly pruned—lopped back from over the footpath. Canopy spread: 20 m; Height: 21 m; Girth: 3.15 m.
16.	<u>Ulmus procera</u> Salis. (English Elm)	Three times, Customs House Cnr Flinders & William Streets.	A fine row of trees in the grounds of St Paul's Cathedral forming an important feature in the landscape. Planted on 14 July 1933 after being transplanted from Yarra Park when they were c. 16 years old and 20 feet high, to provide a shady rendezvous for the citizens of Melbourne following completion of the Spires of the Cathedral.
17.	<u>Fraxinus oxycarpus</u> Willd. (Desert Ash)	Five trees, Cnr Swanston & Flinders Streets.	

NAME	LOCATION	CITATION
18. <i>Platanus x acerifolia</i> (Ait.) Willd. (London Plane)	Avenue, Collins Street between Swanston & Spring Streets.	Possibly the most famous address in the C.B.D. these trees contribute significantly to the landscape, providing the ideal streetscape of offering shade and a scale important in this busy commercial section of the city.
19 <i>Platanus x acerifolia</i> (Ait.) Willd. (London Plane)	Three trees, Melbourne Club 36 Collins Street	Outstanding specimens - one in particular is the largest of that species known in Victoria. The planting is an important group associated with an historic building.

NOTES ON OTHER TREES WORTHY OF CONSIDERATION

City Square: Plane trees and one very large Elm, possibly one of the largest trees ever shifted in Victoria.
 Flinders Street: Opposite Queen Street intersection, 3 fine specimens of *Phoenix canariensis* located alongside the trainlines.
 A.B.C. Studio: Lonsdale & William Streets, a medium-sized Elm and Oak trees being important to retain.
 R.M.I.T.: Fine avenue of *Fraxinus oxycarpa* running through Bowen Street. Also a single specimen behind the Museum of Victoria in Russell Street.
 Flagstaff Gardens: Not surveyed although there may be notable trees in existence there.

APPENDIX THREE

1993 Review Project Brief



FINAL PROJECT BRIEF - CENTRAL CITY HERITAGE STUDY JUNE 1992

Purpose of Study

Strategic Planning Branch is commissioning a study that will update Council's 1985 Central Activities District (CAD) Conservation Study.

Current thinking in heritage conservation suggests that an analysis of the cultural and social development of historic precincts can provide a broader understanding of historical significance than the previously common emphasis on building and architectural reviews. Council's 1985 CAD Conservation Study is an example of this older style of study and requires additional work to improve its relevance to planners and the wider community.

Areas that will require detailed investigation in this study include 20th Century buildings, structures located on laneways, sites of likely archaeological significance and a broad range of other features of heritage value.

Fundamental to the study is the use of information technology compatible with City of Melbourne land information systems.

Study Objective

To provide the Corporation and the general public with a definitive study of Central City Heritage aimed at increasing awareness of the dynamic nature and history of City buildings and significant features.

The study will:

- Investigate and make recommendations on possible categories or levels of conservation status, and develop a typology of Central City Buildings;
- Update Council's 1985 CAD Building Identification sheets and building citations to include these new gradings;
- Investigate options for broadening the scope of heritage data by, for example, including likely sites for archaeological exploration;
- Investigate and make recommendations on changes or additions to the existing Central City Heritage Precincts and Precinct boundaries.
- Prepare an environmental history component aimed at highlighting significant buildings, precincts, and features in the history and development of Central Melbourne;
- Provide the basis for a broad range of interpretative material for visitors, residents and business interests in Central Melbourne;

Study Scope

The study will seek to document significant stages of Central Melbourne's development up until 1974. Significant buildings and structures constructed after that date may be recorded.

The study will consider the area designated Central City under the Melbourne Planning Scheme including the Parliamentary Precinct and the Eastern Hill Precinct.

Principles

In preparing a study as significant as this it is proposed that a number of important principles be considered:

1. The study is to promote understanding by the general public of information and detail on the features of heritage significance within the Central City.
2. The study will be relevant to contemporary society and offer the potential for easy updating of information.
3. Current information technology for the storage and retrieval of information must be used. The system devised will be compatible with City of Melbourne systems and desirably with those of the Department of Planning and Housing and the National Trust. Further detail on the Information Technology requirements of this study will be supplied by the project managers as this information becomes available and it is acknowledged that any data input requirements will be the responsibility of City of Melbourne.
4. Central to this study is the proposal to incorporate evaluation mechanisms into the operation of a revised conservation strategy for the Central Activities District (CAD).

To build these mechanisms into the study the consultant shall formulate a set of standards by which the operation of a revised CAD Conservation Study will be measured. This will include monitoring the impact of new planning controls and development approvals on the achievement of the study objectives, and will be the subject of review by the study Steering Committee.

Components of the Study

This study will be undertaken in three components with an anticipated completion date of January 1993. The development of an educational component is seen as an additional element of this study and the brief for this stage will be undertaken during the latter part of 1992.

Part 1

Objective

To develop a comprehensive bibliography of publications recording and commenting on the development of Central Melbourne.

Tasks

- Survey, locate and record data on the history of Melbourne's development including the significant stages of construction.
- Provide annotations on these data sources outlining date, context and detail of each heritage study or commentary.

Timelines

A draft of this bibliography should be prepared by the end of August 1992.

Cost

As an indication of cost, Part 1 should cost \$4,000.

Part 2

Objective

To develop an environmental history that provides historical comment and context for city heritage.

Tasks

Prepare a streetscape and precinct overview of the historical and social development of city building trends.

As agreed in discussions with the project Steering Committee this component will comprise the following chronological bands:

Pre Gold: to 1852

Gold: 1852 - 1859

Boom and Bust: 1860 - 1900

The City Beautiful: 1900 - 1929

The New Image: 1930- 1956

The Urban Spurt: 1956 -1974

Within these historical periods there will be a number of themes introduced that will cross time periods. These themes have been agreed by the Steering Committee to include:

Historical Narrative

Social Development

City Economy

Government

Town Planning

Utilities

Public Works

Building

Architecture and Streetscape

This component of the study will:

- List significant events associated with buildings or precinct developments. (Precincts are those referred to in the Melbourne Planning Scheme.)
- Identify potential sites for archaeological exploration.
- Referencing will acknowledge the typology referred to in Part 3 and all sources will be footnoted without impinging on the flow and readability of the report.

Timelines

To be undertaken concurrent with the preparation of study bibliography, it is envisaged that this component of the study will not be completed until the end of Part 3 (Review). However a draft outline of the environmental history should be completed by the end of August 1992.

Cost

As an indication of cost, Part 2 should cost \$7,000.

Part 3

Objective

To prepare an updated Central City Conservation Study.

Tasks

- Develop a typology for use in the review of significant Central City features and buildings. In discussions with the project Steering Committee it has been agreed that the typology will include the following detail:

- Type
- Period
- Construction
- Materials
- Technology
- Style
- Historical Association

- Develop a building grading system for use either within or outside of historic precincts.
- Develop and implement a process for updating existing conservation buildings information sheets.
- Review heritage precincts and recommend any alterations or additions to the current list of precincts.
- Identify contributory buildings within precincts.

Timelines

Recommendations regarding typology development and methodology should be finalised by the end of August 1992 and this component of the study completed by January 1993.

Cost

As an indication of cost, Part 3 should cost up to \$29,000.

Reporting Arrangements

Jacqui Lavis (Team Leader - Local Planning and Housing, Strategic Planning Branch) will chair this study, with Noel Gately (Policy/Project Officer, Strategic Planning Branch) responsible for the management of the consultancy.

A Steering Committee has been formed to advise and monitor this study and will include representatives from the Department of Planning and Housing, National Trust, Engineering and Architectural Institutes, an Historian and a community representative (City Heritage Watch).

Consultant Services

Together with meetings with the project managers the Consultants will be expected, on occasions, to meet with the Project Steering Committee to clarify project directions. Such meetings will be subject to a consultancy fee of \$55 per hour. All other report back meetings are including in the costings for the preparation of each study component.

This consultancy is let in accordance with the standard schedule of conditions of appointment as attached. The Consultants will carry out the obligations and duties as set out in this Brief to the reasonable satisfaction of the City of Melbourne.

The study team will be required to submit to the Project Steering Committee two copies of their final report (hard copy) together with the computer disk on which the document has been prepared.

A schedule of payments has been prepared and is attached to the formal offer of consultancy. The study budget has been approved to a maximum of \$40,000 for the financial year ending 30 September 1992. Additional funds for the further development component of this study will depend on budget allocations for 1993 and these details will be discussed further with the study team at that time.

LAURINDA GARDNER
MANAGER - STRATEGIC PLANNING
JUNE 1992



APPENDIX FOUR

**Building Identification Forms
for Proposed Notable Buildings**