

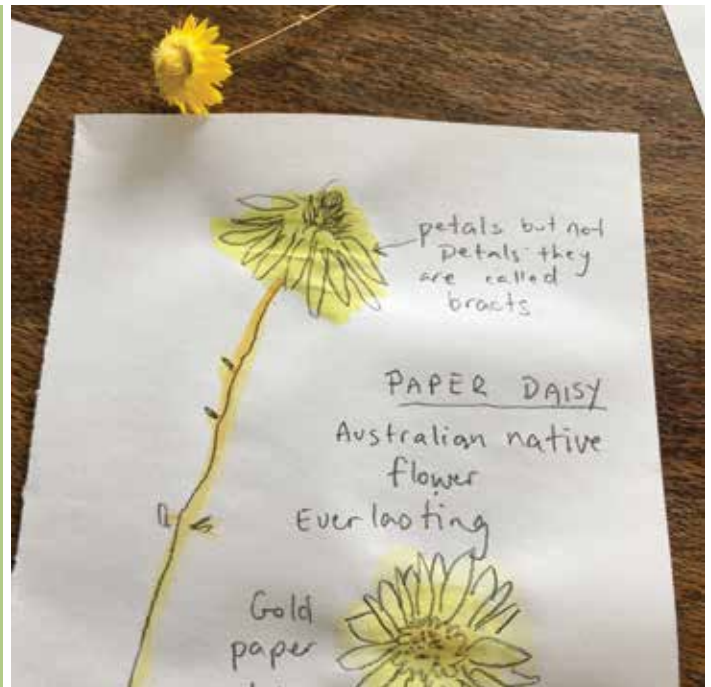
ARTPLAY AT HOME



Museum
BY ARTPLAY STAFF



Create a museum exhibition at home



Instructions

Head off outside on an exhibition expedition to collect some natural specimens. (Or find interesting things around the house if you'd prefer e.g. spices from the kitchen)

Then do some scientific drawings of your specimens. What do you observe? Look really closely and draw what you see.

Write down your observations about your specimens next to your drawings, the colours and textures, the different parts of the specimen. Include some facts if you like - for example, perhaps you know the name of the tree a leaf came from.

Then, think about how you want your exhibition to look. Do you want it to fill a whole room, go up and down the stairs or be a tiny little show on a tiny little shelf? You will be the one guiding people on how to look at things and spark their interest.

What can you find around the house (or what can you build) to display your work and findings? Paper, boxes, chairs, containers, books, hanging things with string or building cases out of cardboard... go!

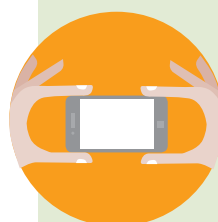
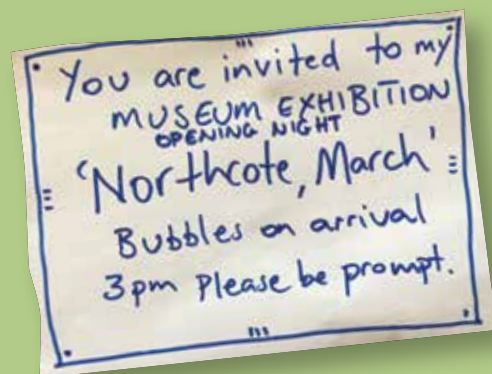
Then it's time to put it all together.

You will need

- Your good brain
- Somewhere for collecting objects (preferably outside)
- Pens, markers, pencils or pastels
- Paper
- Plastic containers

Exhibition opening

Once your exhibition is ready, it's time for your grand opening! You could make invitations and invite your family to come along, and perhaps you could even give a talk about your work.



Share photos of your work on the **ArtPlay Facebook page** or on **Instagram** - tag us **@artplaykids** and hashtag **#artplayathome**

www.melbourne.vic.gov.au/artplay